

Environment Co-ordination Department Report Geoff Skene, Manager

September 2002

1. Waiwhetu Stream (Tim Porteous)

Work has commenced on a study of the factors that are relevant if the Waiwhetu Stream is to be moved (the Hutt Park option). In essence this is a pre-feasibility study to identify the relevant aspects of a full investigation of this option. This will be completed in mid November.

2. Pauatahanui Inlet (Tim Porteous)

The Pauatahanui Inlet Community Trust will have had two meetings by the time the Committee meets. The new members of the Trust are coming to grips with the issues and, collectively, the Trust's members are busy working out what they want to do.

3. Take Action (Jo Campbell; Richard Morgan; Jo Fagan; Eleanor Phillips; Susan Hutchinson-Daniel)

Schools doing *Take Action* in the third term have been completing their action projects recently. St Pius School has completed most of its projects, including a radio advertisement, four posters, a play, tree planting, and a stormwater leaflet.

St Marks School students completed a beach clean up at Oriental Bay, fridge magnets, a web site, a school recycling system, and a design for a more effective rubbish bin lid in the school grounds. Other projects which are underway include designing a school garden, setting up an eco-friendly car-wash and doing storm drain monitoring and clean-ups in their own streets

Two schools doing the self-guided programme have also been active. St Benedict's School staff have been trained to use the Stream Monitoring Kit and successfully ran a field trip at Stratton St, Belmont Regional Park, with input from the Ranger, Chris Wooton.

Pauatahanui School is undertaking tree-planting as an action project, with input from Porirua City Council and Nigel Clarke.

As part of our efforts to encourage environmental education in the Region, Jo Campbell has given lectures to pre-service trainee teachers at the College of Education.

4. **Take Care (Nigel Clarke et al.)**

Decisions have been made on the applications received in this year's *Take Care* funding round. We are able to support five of the eight applications (the performance indicator requires only two additional groups be supported). The successful applications are:

- the restoration of a dune at Eastbourne;
- weed control and restoration of a wetland at Otaki;
- a wetland restoration in Masterton;
- community water quality monitoring at the Pauatahanui Inlet; and
- riparian restoration at Silverstream in Upper Hutt.

A full report on the successful groups and containing a summary of all of the existing care group projects will be made to the next meeting of the Committee, in line with previous year's practice.

Around the Region, care groups are continuing with their work, with the planting season now concluding. One notable achievement has been the progress made on the construction of the penguin area at Greta Point.

Resource Policy Department Report Nicola Shorten, Manager

September 2002

1. Maintaining Regional Policies and Plans (Murray McLea and Nicola Shorten)

Proposed Regional Plan Changes were publicly notified on 9 February 2002. The Proposed Changes include withdrawal of the Transitional Regional Plan, changes to bore rules on the Kapiti Coast, and other small changes to all the other Regional Plans except the Regional Coastal Plan.

Draft officer reports on submissions on the Proposed Regional Plan changes have now been completed. One report has been forwarded to Simpson Grierson for legal advice. It relates to submissions on 1080 and the use of heavy vehicles and machinery on stopbanks.

The Council did not accept some submissions relating to 1080, which were outside the scope of the Proposed Plan Changes. Legal advice was sought at the time the submissions were received and following a careful examination of our options, those submissions were omitted from the Summary of Submissions.

The advice now being sought will ensure the Council's approach to those submissions relating to 1080 that were accepted are thorough enough. Following any changes required as a result of the legal advice, the reports will be forwarded to the submitters. We hope to hold hearings in November.

Aquaculture was the subject of a report to the last meeting of this Committee. Recent discussions with the Ministry for the Environment indicate that they expect the main reform legislation to be introduced to Parliament in November of this year.

Coastal occupation charges were the subject of a regional coastal planners meeting this month. Councils are trying to get a nationally consistent methodology.

2. Regional Plan Implementation

2.1 Marine Biodiversity (Paul Denton)

Good progress is being made on the three key aspects of this project – community engagement, integrated decision making and information management.

The metadata base is being tested for production. The database will record technical and non-technical publications for the study area. Our aim is to document existing information, which can be used in conjunction with a user needs analysis, to identify information gaps.

A brief for community consultation is being prepared, which will include working with community groups and organising a series of talks at Te Papa. A new webpage about the project is being designed for the Council's website.

A consultant has completed a legislative review of decision making affecting marine biodiversity. We are now looking to proceed with a study of how decisions are made in practice. The aim is to help us identify linkages and opportunities for public participation and, perhaps more importantly, where these are missing.

2.2 **Wetland Action Plan (Melanie Dixon)**

Submissions on the Wetland Action Plan are being worked through and meetings with stakeholders have been completed. An Iwi technical Workshop is being organised for 13 November 2002 to provide Iwi with the opportunity to input into the plan.

2.3 **Freshwater Ecosystems (Murray)**

Dr Robert McDowall gave a talk in Wellington on 4 September on *Hidden Treasures Exposed: Discovering our Freshwater Fish Fauna*. The lecture, organised by the Wellington Regional Council and NIWA, was introduced by Cr Buchanan and enthusiastically received by about 150 people.

3. **Iwi matters (Keriana Wilcox)**

An Iwi Technical Workshop on Emergency Management was held at the Beehive. The purpose of the workshop was to share information on natural hazards in the region, and to talk about emergency management procedures from a regional and international perspective. The workshop was well received and participants were very interested in the Council's work in this area.

There was a Councillor walkover of the Wairarapa rohe on the 25th of September. The day included a visit to the Okautete Marae where local elders spoke about the history of the area, some of the projects being undertaken in the Okautete area and the vision of the hapu. Another stop was the Tauweru Urupa where the group learned about the history of the area and what the project meant for the people. Feedback has been very positive.

We have received end of year reports from most Iwi in accordance with their administration funding contracts. A review of this funding will be the subject of a report to the next meeting of Ara Tahi.

4. **Reporting on the State of the Environment (Nicola Shorten/Paul Denton)**

Summary information on the state of the environment has been completed and is currently being edited. This information will be published as a series of 'report cards' this year. The report cards will be formatted, printed and distributed next month.

5. **Hazards (Rylee Pettersson)**

Natural Hazards Awareness Week runs from 7 to 11 October this year. Posters, postcards and pamphlets have been produced and will be distributed during the week. The posters will be displayed in all buses and trains in the Region. Rylee will also be involved in a Business Breakfast organised by WEMO during the week, and a school breakfast seminar the week after.

Meetings have been held with all territorial authorities as part of a stakeholder needs analysis. The purpose of this project is to find out whether the data we collect and supply to the territorial authorities and other parties is useful, and how it can be improved or made more relevant. The next stage of this process will be to hold discussions with utility companies and other groups (e.g. emergency service, consulting engineers etc).

A Hazards/Emergency Management stand was displayed at the Home and Garden Show at the Stadium.

6. **CentrePort Environmental Consultative Committee (Nicola Shorten)**

This Committee met on 5 September. The Committee discussed environmental issues related to the Port. A key project is the dredging of the harbour entrance and wharf areas. Consultation with interested parties is continuing and there is no definite time-line for the completion of consent applications.

7. **Staff**

Richard Jongens has resigned from his position of Corporate GIS Officer. I would like to wish him well in his new position at the Institute of Geological and Nuclear Science.

Resource Investigations Department Report

John Sherriff, Manager

October 2002

1. Resource Information

1.1 Flood Warning

The Resource Investigations Department provides a flood warning and monitoring service for the western part of the Wellington Region. Rainfall and river level recorders around the Region automatically relay information to the Regional Council Centre. When specified rainfall intensities or river levels are reached the system automatically alerts staff who implement response procedures.

Since the last meeting of the Committee alarms was received and responded to:

24 August 2002	Water level: Porirua
25 August 2002	Rainfall: Transmission Lines
8 September 2002	Rainfall: Oriwa
29 September 2002	Rainfall: Warwicks, Kaitoke, Kapakapanui, Waikanae, McIntosh. Water level: Kaitoke, Cemetery, Horokiri.

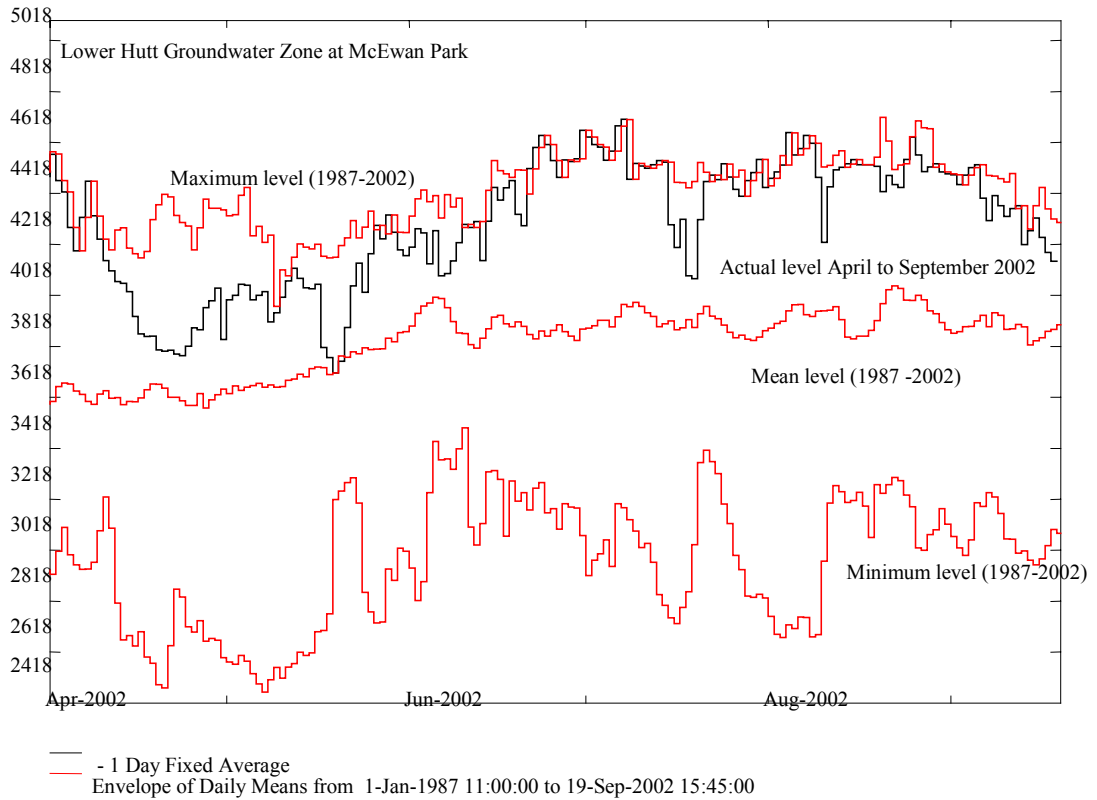
2. Resource Analysis

2.1 Groundwater Levels

The Department monitors groundwater levels at 46 sites around the western Region. We use two of these bores, McEwan Park at Petone and Hautere Plain on the Kapiti Coast as general indicators of the state of groundwater resources in these areas.

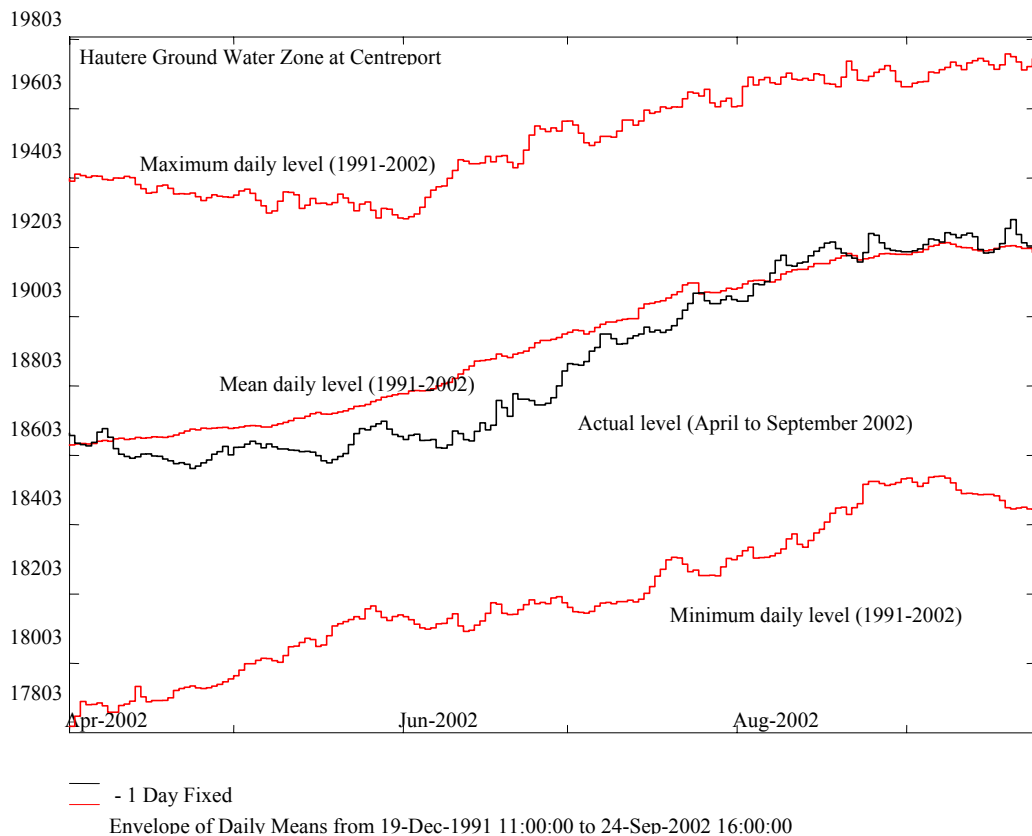
The following graphs present a comparison between water levels recorded this year and historical summary data for the McEwan Park and Hautere Plains sites.

Lower Hutt Groundwater Zone – Upper Waiwhetu Artesian Aquifer



Artesian pressure in the Upper Waiwhetu Artesian Aquifer measured at the Petone foreshore has been close to maximum-recorded values since May this year. The artesian pressure has been so high that water has leaked out the top of our recorder tower attached to the bore at Somes Island.

Kapiti Coast

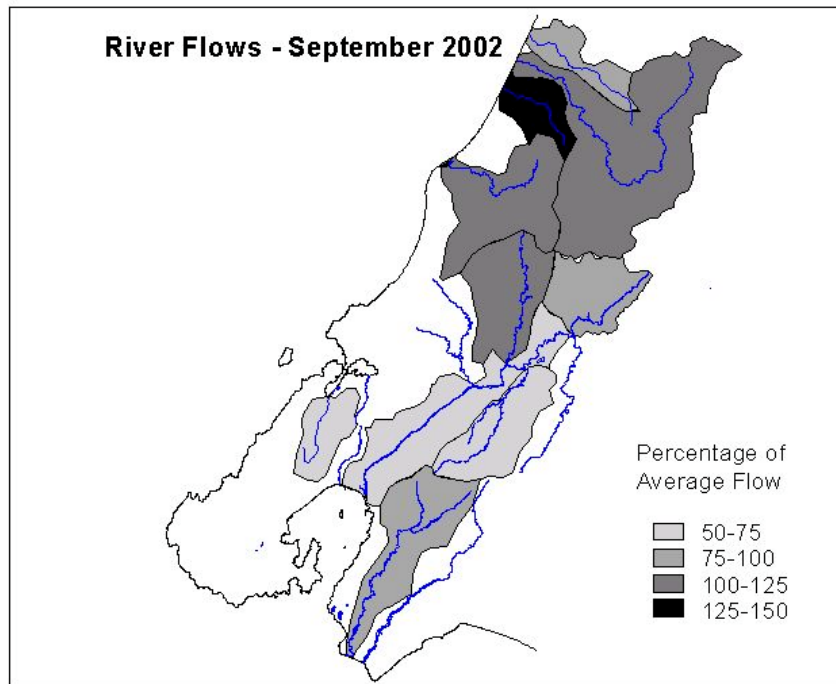
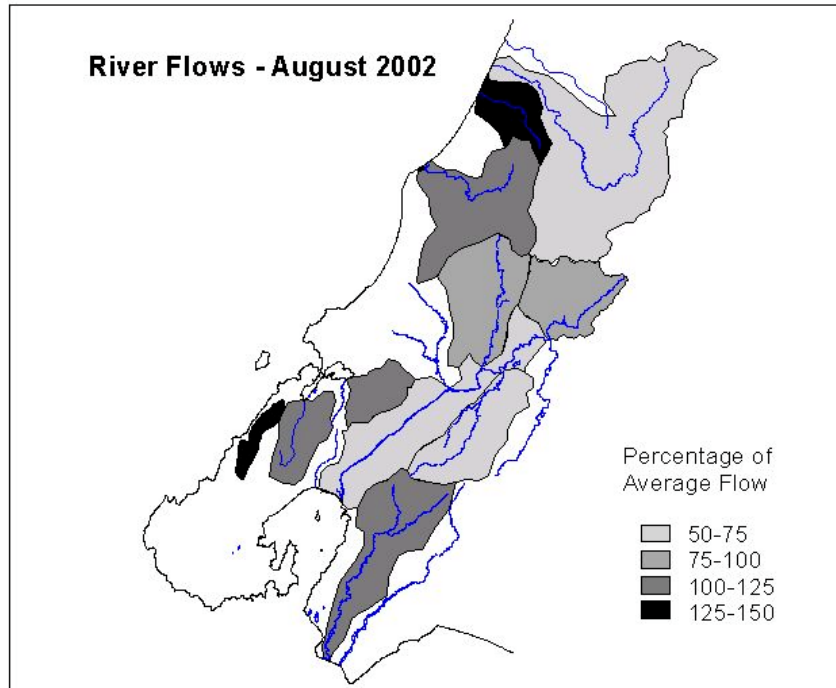


Groundwater in most Kapiti Coast aquifers has been at average levels since April this year.

2.2 **Rainfall and River Flows**

During August the Porirua and Orongorongo catchments received well above average rainfall totals (150% and 130% respectively). The rest of the western Region received slightly below average to average rainfall. Flows in the Mangaone Stream and Mill Creek were well above average river flows for the month, while the Hutt River and its sub-catchments, as well as the Otaki River, all had about 70% to 80% of their normal river flows.

In September, rainfall across the Region was below average to average at all monitoring sites. The Porirua catchment received only about 70% of normal rainfall. River flows were similarly below average to average with the exception of the Mangaone Stream, had flows of about 130% of normal. Flows in the Hutt and Porirua catchment were as low as 70% of average.



River flows as a percentage of normal for August and September 2002.

2.3 Air Quality Monitoring

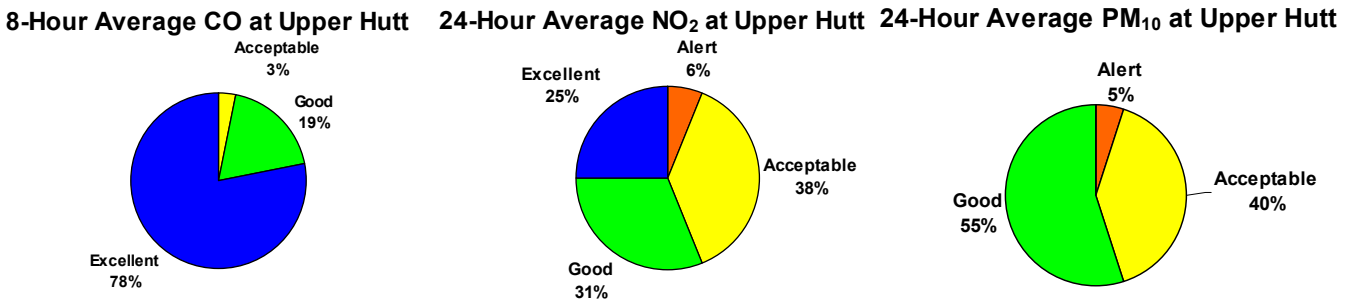
2.3.1 Ambient Air Quality Monitoring

We currently monitor ambient air quality at two sites in Lower Hutt (Birch Street Reserve) and Upper Hutt (Trentham Fire Station).

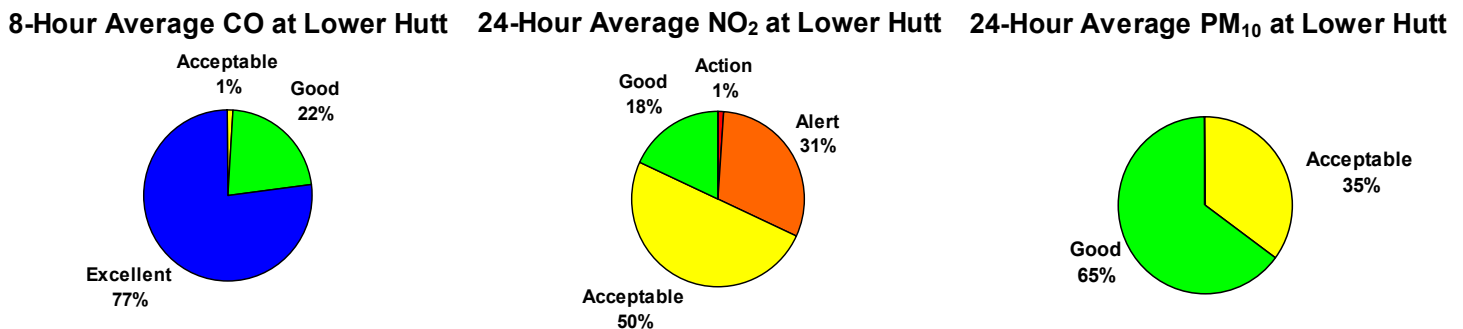
The graphs below represent air quality at the location indicated when the monitoring results are compared to ambient air quality guidelines. The assessment categories are as follows:

Category	Maximum Measured Value	Comment
Action	Exceeds Guideline	Completely unacceptable by national and international standards.
Alert	Between 66% and 100% of the guideline	A warning level which can lead to guidelines being exceeded if trends are not curbed.
Acceptable	Between 33% and 66% of the guideline	A broad category, where maximum values might be of concern in some sensitive locations, but are generally at a level that does not warrant dramatic action.
Good	Between 10% and 33% of the guideline	Peak measurements in this range are unlikely to affect air quality.
Excellent	Less than 10% of the guideline	Of little concern.

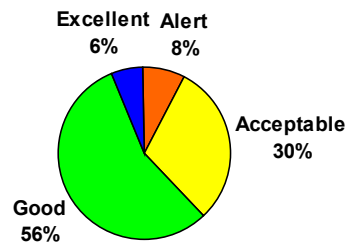
Results for the Winter of 2002 at Upper Hutt



Results for the Winter of 2002 at Lower Hutt



24-Hour Average PM₁₀ at Wainuiomata



Results for the Winter of 2002 at Wainuiomata

During the winter of 2002 there was one exceedence of the air quality guideline for fine particulate matter at Upper Hutt and at Wainuiomata. A milder winter this year with fewer frosts than the winter of 2001 has resulted in fewer breaches of the guideline.

3. Pollution Control

We have recently changed the name of the Resource Quality Section to the Pollution Control Section. This name provides a much better understanding of what this group's role is within the Council.

Our Pollution Control team provide a pollution response service to the western Region. They are also involved in monitoring compliance for non-consented activities, and waste management and contaminated sites issues.

3.1 Pollution and Non-compliance Complaints

A summary of pollution complaints, our performance in responding to them and enforcement action taken is reported separately.

3.2 Unwanted Agrichemical Collection

Collection of unwanted agricultural chemicals was started in the western Region during August. The following table summarises collections made this financial year.

Collections completed	124	
Total chemical collected	3759.2kg	30.31 kg per property
Quantity needing to be exported for disposal	1576.9kg	41.9%
Quantity able to be disposed of locally	1133.1kg	30.12%
Quantity able to be re-issued	1049.2kg	27.9%

The number of registrations received from the western Region has been very disappointing. We have decided to set 31 October as a closing date for registrations in the hope that this will encourage people to make use of the service being provided by the Council. This closing date has been advertised in the October edition of *Elements*. It will also be promoted in other media.

3.3 **Quality System Audit**

The Council has ISO accreditation for its Incident Response, Consent Processing and Environmental Data Gathering activities. TELARC have recently completed their annual review of our Quality Assurance System. This review identified a number of small issues which needed to be completed to ensure that our quality system complies with the new ISO 9000/2000 standard.

3.4 **Sewage Manual**

Pollution Control staff have recently been working with the Regional Public Health service to update the Region's sewage response manual. This manual outlines responsibilities for dealing with sewage spills in our Region and provides guidance about how to respond to sewage spills. A recent sewage spill at Keneperu Hospital identified shortcomings in the existing manual, specifically that it had no procedures for dealing with large spills to land.

3.5 **Owhiro Stream Enhancement**

Councillors may remember that following an unauthorised discharge of centrate into Owhiro Stream in November 2000 Anglian Water International made a donation of \$20,000 to be used for the enhancement of Owhiro Stream.

Since that time we have been working with Owhiro Bay residents and Wellington City Council to, firstly decide how to use this money and subsequently, develop a planting plan for enhancing the riparian margins of the stream. This plan has recently been completed. Work will soon start on clearing weeds and preparing ground so that planting can proceed next planting season. Annette McGovern from Consents Management is the WRC representative on this group.

As part of Clean Up New Zealand week, staff from the Environment Division spent an afternoon cleaning up Owhiro Stream.

3.6 **RMLA Commendation for Enforcement Procedures Manual**

Our Enforcement Procedures Manual received a highly commended award at the Resource Management Law Association Conference.

4. **Staff**

Regrettably two of our Pollution Control Officers, Craig Salmon and Natasha Lewis, have resigned and will be leaving the Council during October. Their departure highlights some issues about the nature of the work we ask our Pollution Control Officers to undertake, and the effect that it has on job satisfaction and staff retention. This issue is currently being examined.

Consents Management Department Report Paula Hammond, Manager

October 2002

1. Consent Statistics

In the period to 31 September 2002 we received 69 consents. This compares with 84 consents received for the same period last year.

All consents have been processed within statutory time frames.

A summary of the notified consents we are currently processing is attached.

2. Appeals

We are still waiting to hear from all the State Highway appellants as to whether they are continuing to proceed with appeals against WRC consents.

Mediation for the Sink F69 was held on July 2002. As a result of the mediation, additional conditions have been drafted and are likely to be signed off by consent order shortly.

3. Compliance

3.1 General

We have been working hard to develop proactive monitoring strategies for industries that produce a high levels of odour. Our approach is discussed further in the *'Rationalising our Response for Odour Complaints'* paper.

3.2 Abatement Notices

Since the last committee meeting we have issued two more abatement notices. The first notice was issued to Rushes Restaurant and requires them to address issues relating to the quality of effluent being discharged to land from their septic tank.

The second notice was issued to Sealed Air (NZ) Ltd. Sealed Air (NZ) Ltd has, for some time, been operating at an increased production level resulting in an increase in emission levels. The abatement notice requires Sealed Air to apply for a change of consent condition to account for the increase in production.

The five abatement notices we issued in August have been complied with.

3.3 **Infringement Notices**

We have issued one infringement notice since the last committee meeting.

The notice was issued to Truebridge Callander Beach for disturbing the bed of an unnamed tributary of the Pauatahanui Stream and placing a culvert and depositing cleanfill without a resource consent.

3.4 **Prosecution and Enforcement Orders**

We have not initiated any further prosecutions or enforcement orders. However, the prosecutions against Burrell Demolition are still working their way through the court system.

Notified Resource Consents in Progress

Applicant	Proposal	Date Consent Lodged	Date Submissions Closed	Number of Submissions Received	Pre-hearing Held	Hearing Held	Hearing Committee Members	Date Decision Released	Granted or Declined
New Zealand Galvanising	Discharge to air for contaminants from a hot dip galvanising process and associated activities.	24/07/00	29/08/00	4	08/09/00	Application on hold to allow for monitoring results to be discussed with applicant and submitters.			
Transit ¹	Consents associated with the construction of an interchange at the intersection of State Highway 2 and 58.	07/11/00	19/01/01	99	N/A	27/06/01 – 16/07/01 Reconvened on 01/08/01-02/08/01 and 27/08/01	Commissioners Helen Tobin, Russell Howie and Richard Fowler	12/10/01	Granted – one appeal received
Transit ¹	Consents associated with the realignment of State Highway 58.	07/11/00	19/01/01	99		27/06/01 – 16/07/01 Reconvened on 01/08/01-02/08/01 and 27/08/01	Commissioners Helen Tobin, Russell Howie and Richard Fowler	12/10/01	Granted – one appeal received
Wellington City Council	Change of consent monitoring conditions for the Moa Point Pump Station.	02/11/00	08/12/00	2		On hold for further information in relation to monitoring requirements.			
Wellington City Council	Renewal of discharge of milliscreened effluent to the coast during wet weather events, Western Wastewater Treatment Plant.	20/12/00	05/03/01	9	17/05/01	8/10/01 9/10/01	Ian Buchanan Ian Stewart	26/10/01	Granted, one appeal – mediation held 27 June
Transit ²	Upgrade of State Highway 2 from Dowse Drive to Petone.	30/03/01	29/05/01	100+		1/10/01 – 9/10/01	Helen Tobin, Richard Fowler, Barry Butcher		Granted – three appeals received

Applicant	Proposal	Date Consent Lodged	Date Submissions Closed	Number of Submissions Received	Pre-hearing Held	Hearing Held	Hearing Committee Members	Date Decision Released	Granted or Declined
Transit ³	Ventnor Drive Interchange.	31/7/01	11/06/02	Apx. 3 on regional issues	N/A	02/08/02	Irvine Yardley, Liz Mellish	23/08/02	No appeals received
Steamship Wharf Limited ⁴	Relocation of Greta Point Tavern to Queens Wharf.	11/07/02	22/08/02		N/A	23/09/2002 and 26/09/2002	Helen Tobin, Don Turley, Irvine Yardley, Miria Pomare	Decision due 17/9/02	
BP Oil NZ Ltd	To change the use of an existing pipeline by resting it on petroleum product instead of seawater between shipments.	20/7/01	16/10/01	17		Hearing scheduled for end of October			
Sink F69 Charitable Trust	To create an artificial reef by sinking the former HMNZS Wellington.	3/10/01	3/12/01	72		25/02/2002 and reconvened 6/3/02	Ian Buchanan, Miria Pomare, Irvine Yardley	27/3/02	Granted, two appeals received Mediation held 30/07/02
Wellington Regional Council – Flood Protection	To extract gravel from the Waikanae River for flood protection purposes.	04/12/01	08/02/01	11		14/08/02	Christine Foster and Aka Arthur	3/9/02	No appeals received
Nuplex Environmental	Discharge to air from operation of a liquid and hazardous waste processing plant.	15/4/02	28/5/02	18		10/09/02 and 13/9/02	Ian Buchanan, Irvine Yardley, Miria Pomare	Decision due 4/9/02	

- 1 These applications will be heard jointly with Hutt City Council, Porirua City Council and Upper Hutt City Council
- 2 These applications will be heard jointly with Hutt City Council
- 3 These applications will be heard jointly with the Kapiti Coast District Council
- 4 These applications will be heard jointly with the Wellington City Council

Harbours Department Report

Mike Pryce, Manager

October 2002

1. Harbour Navigation Aids

All navigation aids are operating satisfactorily. Point Jerningham light malfunctioned one night because of a faulty “sunswitch” but was repaired the next day.

2. Oil Pollution Response

- Nine reports of oil spills were investigated. Only one minor spill required any clean-up action.
- A WRC staff member went to Te Atatu, Auckland for a Maritime Safety Authority “Fundamentals” training course in oil spill response.
- On 19 September Manager, Harbours and Grant Nalder visited staff at the Manawatu-Wanganui Regional Council offices at Palmerston North and discussed marine oil spill response issues. An inspection was made of their small stockpile of oil pollution response equipment stored at Kairanga.

3. Departmental Activities

- On 27 August Deputy Harbourmaster attended a Dangerous Goods Working Group meeting at the Maritime Safety Authority.
- On the late evening of 17 September Manager, Harbours, in conjunction with Maritime Safety Authority, audited the Dangerous/Hazardous Goods documentation and procedures of road and rail cargo loaded onto the rail ferry *Aratere* at Wellington.
- On 20 September Manager, Harbours and Deputy attended a follow-up meeting after that audit with Maritime Safety Authority and InterIsland Line.
- On 25 September Manager, Harbours attended an Oil Pollution Advisory Committee workshop containing presentations by overseas speakers who had attended Spillcon in Sydney the previous week.
- On 26 September the Deputy Harbourmaster attended the Paremata Bridge partnering meeting held at the offices of Beca Carter Ltd. This was to ensure that the navigation and safety aspects of the project were adequately covered.

4. **General**

The ro/ro freighter *Kent* resumed commercial service on 17 September 2002 after repairs.

Fast-ferry *The Lynx* resumed service on 28 September after being in Hobart for several weeks for drydocking and refit.

Emergency Management Department Report

Rian van Schalkwyk, Manager

October 2002

1. National Public Education

The National Public Education Strategy 2002-2007 is a joint strategy developed by the National Public Education Working Group (NPEWG) for civil defence emergency management. The strategy was presented at the Director's Forum in Wellington on 25 September 2002.

The NPEWG was formed in early 2002 and comprises representatives from regional and district councils who consult with, and represent the views of, Civil Defence Emergency Management (CDEM) offices in their respective areas, the NZ Fire Service, NZ Police, the Earthquake Commission and the Ministry of Civil Defence Emergency Management. The Manager, Emergency Management, Wellington Regional Council, is a member of the Group and represents the Wellington and Manawatu-Wanganui Regions on the Working Group.

The strategy seeks to provide a high level overview of the direction for public education and it outlines the purpose, sets the guiding principles, brings together the issues faced by those tasked with delivering public education programmes, and proposes strategies and actions for addressing the issues. The strategy also determines the basis of an annual action plan, which outlines specific areas of activity for each calendar year.

The end result is a strategy for the whole CDEM Sector to take ownership of a National Public Education Working Group that will continue to develop and promote sustainable public education and good guiding principles to be followed. These principles are:

- Committed partnerships – The Ministry of CDEM, regional and territorial authorities, emergency services, and key CDEM stakeholders work collaboratively and in partnership.
- Support for the CDEM Sector – The Ministry will provide support for CDEM Groups to plan for and deliver public education programmes by developing programmes that are accessible to all and that will offer a convenient means for the pooling and sharing of resources.
- Flexibility of Public education programmes – Different regions will have different needs and approaches. Programmes will be tailored to suit local needs.
- Clear long-term objectives at a national level to achieve the agreed goals as set out in the National Strategy, and providing an annual national public education plan by end of December each year to facilitate planning.

2. **Regional Emergency Operations Centre (Beehive)**

In November 2001 the WRC (Manager, Emergency Management) was invited to attend an ODESC meeting at the Beehive to participate in deliberations regarding a new National Crisis Management Centre (NCMC). Following that meeting, the Cabinet on 5 December 2001 decided to proceed with the establishment of the NCMC in the basement of the Beehive and an amount of \$150,000 were allocated to upgrade the facility. The Cabinet also gave very tight time frames and the MCDEM progressed immediately by upgrading the National Emergency Operations Centre (as well as media and IT equipment), they changed the physical layout to accommodate a “whole-of-government” approach and they are now in the process of implementing a NCMC System.

A working party consisting of chief executives of MAF, DPMC, MoH and Police was formed and this working group has determined that to accommodate all the lead government agencies, they’ll need the Wellington Region Suite (the Regional HQ in the Beehive). They have written a Project Charter that incorporates ten sub-projects and one of these sub-projects is the remodelling of the Region’s operational centre.

A letter (reference: 2101-1, dated 10 September 2002) from the Director, Ministry of Civil Defence Emergency Management, addressed to the General Manager, notified the WRC that the Regional EOC (HQ at the Beehive) is now required for purposes of the National Crisis Management Centre. The WRC will have to vacate the premises by the end of February 2003.

3. **Other activities**

- The Masterton District Council invited the Manager, Emergency Management to participate in three workshops with civil defence community leaders on 4 September. Attendance for the three groups was excellent and presentations were made on our role, the importance of being prepared and what could be expected to happen in major emergencies.
- On 11 September Keriana Wilcox arranged a Civil Defence Emergency Management workshop at the Beehive for Ara Tahi members.

Presentations were made on the role of the WRC in CDEM. These outlined:

- the hazards that we are faced with
- practical issues like individual and organisational preparedness
- emergency planning
- business/service continuity planning
- management of the critical needs of search and rescue
- treatment and movement of the injured
- welfare issues (shelter, water, food, etc.)
- sanitation, health issues
- restoration of lifelines, (water, electricity, roads, communications, etc.)

- The Wellington International Airport's annual exercise. Exercise "Falcon" will take place on 24 October. The scenario is a 737 aircraft taking off and then losing control. It skids off the runway and comes to rest on the road at the southern point of the runway. Seventy-four passengers are on board and 15 of them are seriously injured. The WRC (EM) is part of the 'Control' group for the exercise.
- We attended several meetings with the Ministry of Civil Defence Emergency Management regarding the write-up of the Phoenix 2002 Exercise Report. The report is in its final stage but we are still waiting for clarity about contradicting information that we have received from the Auckland health authorities and the Wellington health authorities. It is envisaged that the final report will be ready by mid-October. The full report will be tabled at the next Committee meeting.
- We attended a national workshop in Palmerston North regarding the new National Crisis Management Centre. The new centre is to accommodate the lead agencies of Police, MCDEM, MAF and the Ministry of Health. The Ministry of CDEM will be the facilities manager. The Ministry is in the process of developing an information management system and it was in this regard that we got together to discuss a feasible method of collecting, processing and disseminating information. A draft strategy will be made available within the next two to three weeks.
- From 23 September to 1 October the Manager, Emergency Management attended an UNDAC refresher course in Gufuskalar, Iceland.

Forty five UNDAC members attended the course from 20 countries. The fifteen missions of the last year were reviewed and the lessons learned were discussed. Practical exercises (land and sea search and rescue, use of mission office kits and personal mission kits and information management) were held on a round robin basis.

Annually an award is being made to the best-managed mission and this year the team that went to Jenin in Palestine received the award. Because of the high political influence, the complexity of the emergency and the world's pressure to achieve a positive outcome, it was regarded as one of the best missions ever and one that secured the UNDAC System as an acceptable tool to be used by United Nations agencies.

- Several invitations were received from Rotary clubs and other organisations to address them on emergency management issues. The first address was to the Rotary Club of Hutt on 2 October.

4. Environment

4.1 Earthquake reports

Since the last Environment Committee meeting 11 reports for earthquakes bigger than 3 on the Richter Scale were received from IGNS. Of these only the following earthquakes were felt in the Wellington Region:

2002 Oct 06 **Mag:** 4.6 **Depth:** 25 km *10 km north-west of Greytown*

2002 Sept 29 **Mag:** 3.9 **Depth:** 25km *40km north-west of Otaki*

4.2 Special Weather Bulletins

Since the Committee's last meeting that was held on 5 September, eighteen Special Weather Bulletins (4 for heavy rain and 14 for strong wind) were received. All parties involved were notified and no problems were experienced.

4.3 Communications

Weekly tests of the communications network are still being carried out. The system is functioning well and no problems have been experienced.

Richard Waddy, Divisional Accountant

Financial Position: 31 August 2002

1. Operating Results

We are pleased to report the operating results for the two-month period ended 31 August 2002.

Environment Division
Summary Income Statement
For the Period Ended 31 August 2002

	<u>Actual</u> <u>\$000s</u>	<u>Year to Date</u> <u>Budget</u> <u>\$000s</u>	<u>Variance</u> <u>\$000s</u>	<u>Full Year</u> <u>Budget</u> <u>\$000s</u>
Rates	1,180.9	1,180.9	--	7,085.4
Other Revenue	224.3	303.3	79.0 U	1,850.8
Total Revenue	1,405.2	1,484.2	79.0 U	8,936.2
Less:				
Direct Expenditure	1,143.9	1,307.8	163.9 F	8,064.5
Indirect Expenditure	166.1	170.6	4.5 F	1,006.1
Total Operating Expenditure	1,310.0	1,478.4	168.4 F	9,070.6
Operating Surplus (Deficit)	95.2	5.8	89.4 F	(134.4)

2. Surplus

Overall the Division's finances are satisfactory. For the period an operating surplus of \$95,000 was posted. The result is slightly higher than the budget which provides for a smaller surplus of \$6,000.

The result translates to a net favourable variance \$89,000, comprising reduced revenue of \$79,000, and reduced expenditure \$168,000.

3. **Revenue**

Total Revenue at \$1,405,000 is some \$79,000 below our budget target of \$1,484,000.

The reduced revenue is with a number of notified consents at various stages of completion. Therefore, the shortfall is considered to be temporary.

4. **Total Expenditure**

The Division finds itself in its customary position with a total expenditure at \$1,310,00, some \$168,000 (or 11.4%) below budget.

The main reasons for this variance are:

- Material costs are presently under budget by \$38,000.

The spend on a number of projects is presently at a lower than budgeted level.

- External Contractors and Consultants were \$109,000 under budget for the period.

The shortfall is with the collection of unwanted agricultural chemical collection (\$38,000) and the stormwater investigation work (\$33,000).

The unwanted agricultural chemical collection commenced on the western side of the Region. However, the participation rate has been lower than expected. This is similar to the response pattern that was experienced with the Wairarapa collection.

The stormwater investigation work continues to be hindered. Sampling requires sustained rainfall over a 4-6 hour period to provide reliable information.

The spend on Iwi projects (\$10,000) is slightly behind, compared to our budgets.