

5.2. Appendix 2: Visual Aids to Historical Information

Original Plans

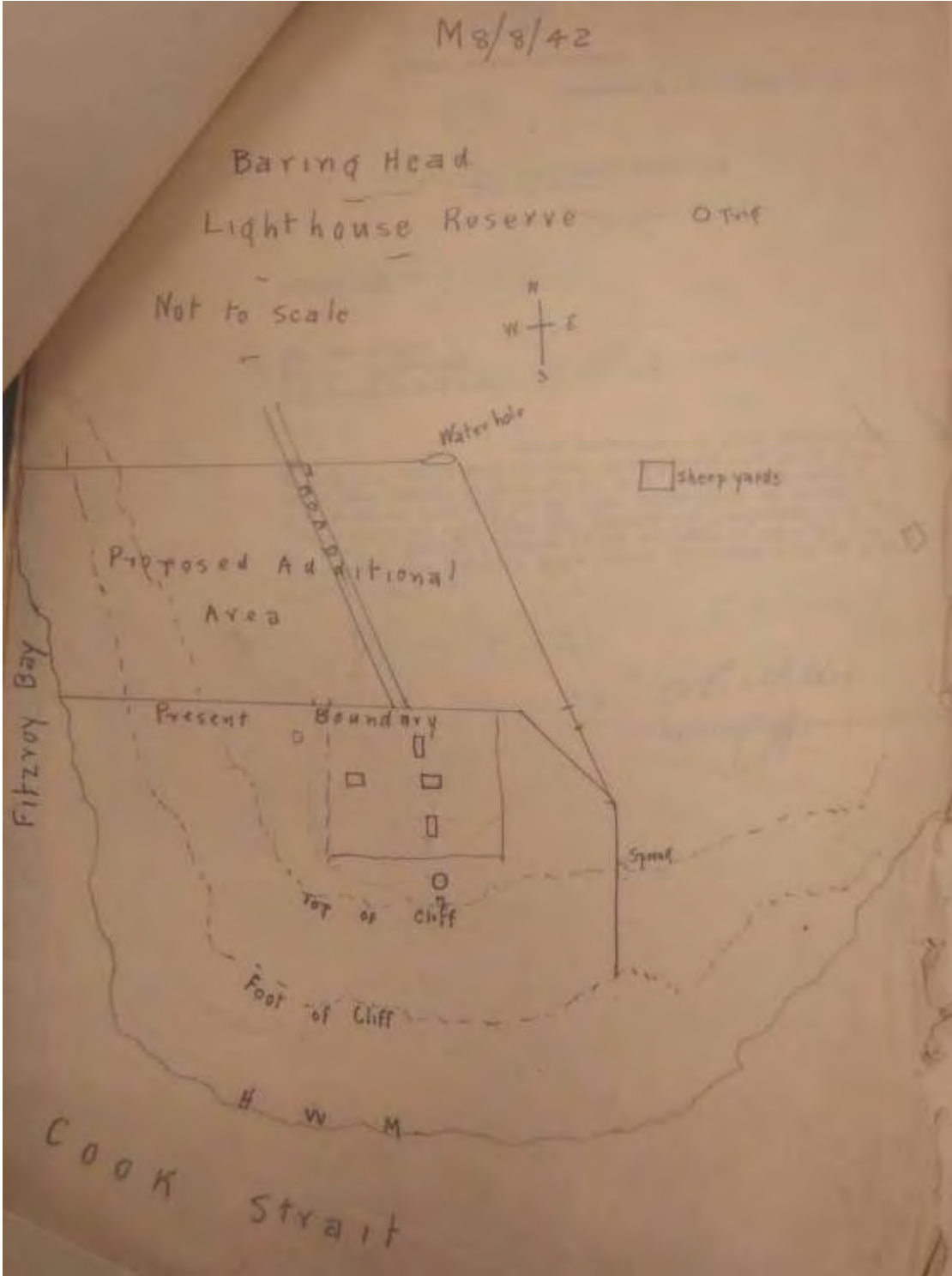


Figure 1: Survey plan of the proposed additional area to be added to the lighthouse keepers' accommodation complex in 1948, showing position of buildings on the site at that time (Baring Head 1928-52, M1 687 8/8/42, New Zealand Archives)



Figure 2: Archsite image for archaeological sites in the vicinity of the lighthouse complex (www.archsite.org.nz)

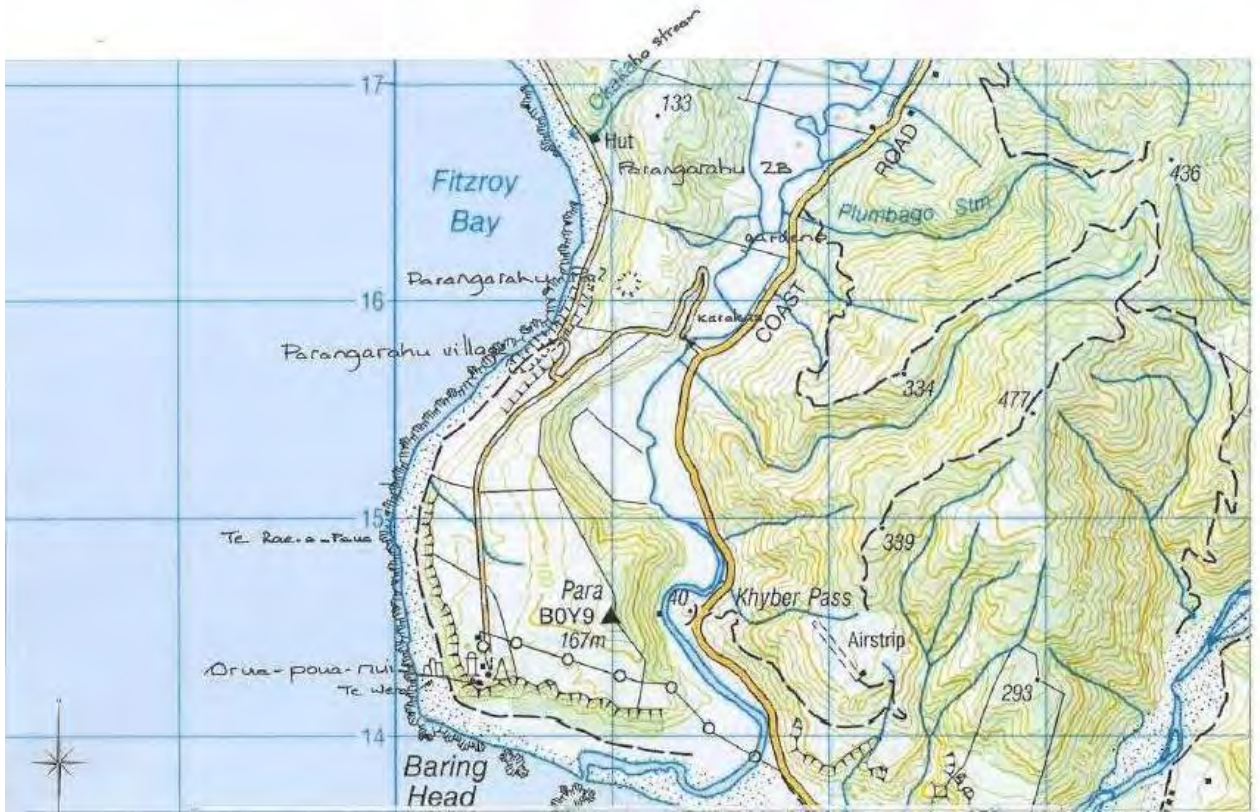


Figure 3: Cultural sites in the wider Baring Head area. Image reproduced from Raukura Consultants 2011, 'Orua-Poua-Nui / Baring Head Cultural Values Report', Greater Wellington Regional Council p.34

Historical Photographs



Figure 4: Baring Head Lighthouse tower under construction in March 1934. (EP-Transport-Shipping-Lighthouses-02, Alexander Turnbull Library)



Figure 5: Baring Head Lighthouse Complex. Photographed 17 August 1937 by an unidentified Evening Post staff photographer, (EP-Transport-Shipping-Lighthouses-01, Alexander Turnbull Library).



Figure 6: A detail of the above photograph showing second garage (signified with an arrow) and another building no longer extant at extreme left of photograph. Towards the top of the photograph another building has not been identified. Photographed 17 August 1937 by an unidentified Evening Post staff photographer. (EP-Transport-Shipping-Lighthouses-01, Alexander Turnbull Library.)



Figure 7: Aerial photograph showing the lighthouse complex in 1935. Photographed 1935 by an unidentified photographer, from the *Evening Post* April 9 1935. (Baring Head - origin - general, M1 769 8/62/1, Archives New Zealand).



Figure 8: The lighthouse keeper's houses showing additions to the front of the houses. Date unknown (Album, ABPL W5221 8848 22E, Archives New Zealand).



Figure 9: This indistinct image shows the lighthouse with the naval signal station close by. A flagstaff and what appears to be radar apparatus are alongside. There are numerous sheds up against the fence. Date unknown. (Album, ABPL W5221 8848 22E, Archives New Zealand).