

---

## 7.4 East Harbour Regional Park

In partnership with Port Nicholson Block Settlement Trust

### *Northern Forest*

***Old forest, birdlife and sensational harbour vistas accessed by well-graded trails***

### *Baring Head/ Ōrua-pouanui*

***Rich in history, a dramatic landscape gradually restoring, close to Wellington but with a far-away feeling. Restored by community***

### *Parangarahu Lakes (Co management Plan vision)*

***Kōhanga-piripiri – Kōhanga-te-ra - Kohanga Ora  
Nests nurturing life and wellbeing***

**East Harbour Regional Park is located on the eastern side of Wellington Harbour and is made up of three separate blocks: the Northern Forest, the Parangarahu Lakes and Baring Head/Ōrua-pouanui. There are high levels of mana whenua and general community engagement in managing all areas of this park, including a co management plan for Parangarahu Lakes with Port Nicholson Block Settlement Trust (PNBST).**

**Northern Forest** - The northern forest covers the steep hills between Eastbourne, eastern bays and Wainuiomata and are covered in regenerating beech/rata forest. The valley floors contain lush lowland podocarp/broadleaf forest. The forest comprises the hills behind Days Bay through to Eastbourne which form part of the scenic backdrop of the Wellington Harbour. Many of the region's native forest bird species are present here. To support the biodiversity the majority of the Gollans Valley is managed as a 'mainland island' with an extensive programme of pest animal control and monitoring supported by volunteer group Mainland Island Restoration Operation (MIRO).

The eastern harbour hills have been popular for recreation activities since the late 1800s. The Butterfly Creek picnic area was developed in the early 1900s as a stop-off for people walking through to the Remutaka Ranges. Many of the tracks in this part of the park have been upgraded to minimise environmental effects from runoff and erosion, and improve accessibility. Some opportunities for track realignments exist as well as heritage interpretation of significant features. The park is also used for multisport events.

**Parangarahu Lakes** – The Parangarahu Lakes are accessed via one of the flattest coastal bike rides in the Wellington region. Lakes Kōhanga-piripiri and Kōhanga-te-ra are nationally significant indigenous ecosystems (Schedule F1, PNRP) with important native plants and wildlife. The Lakes are classified as Scientific Reserves under the Reserves Act and managed with mana whenua under a co management plan, reflected in this plan. Important historic sites include the Heritage NZ listed (old) Pencarrow Lighthouse. The Lakes are easily accessible by cycling or walking eight kilometres from the carpark at Burdans Gate, along the gravel Pencarrow Coast Road (managed by Hutt City and has limited vehicle access). The Lakes are an undiscovered gem for many people in Wellington, yet are one of the most interesting and scenic landscapes in the region. The Lakes became a Regional Park in 1991 and stock grazing stopped in 2004. Vegetation plots and natural processes, have allowed the bush to regrow and thrive with the support of pest plant and animal management (KNE programme and other work) and some pockets of active planting of 'seed source' species. Mana whenua and community groups are active in leading and supporting restoration work here.

**Mana whenua partnership** - Greater Wellington and Port Nicholson Block Settlement Trust (PNBST) jointly manage the Parangarahu Lakes through Te Rōpū Tiaki or guardianship group established in 2012. The Rōpū Tiaki objectives are to implement the long-term vision of the Parangarahu Lakes Co Management Plan, 2014. The core directions of the co management plan are encompassed within this Plan. Based on the vision above of nurturing life and wellbeing, the co management plan identifies key outcomes for this part of the park as:

### Three oranga outcomes indicators of life, health and well-being

#### Tuna Heke

Restoration of the eel and native fishery of the Lakes as a self-replenishing mahinga kai for Taranaki Whānui

#### Manu Korihi

Flourishing forested landscape and healthy wetland-lake ecosystem sustains multitudes of birds and indigenous species and a revitalisation of Taranaki Whānui cultural practices

#### Tangata Kaitiaki

Managers, visitors and Taranaki Whānui are active kaitiaki protecting the catchments as taonga which contributes to personal, community and tribal wellbeing

### Principles for management of the Parangarahu Lakes area

- Kaitiakitanga** – Taranaki Whānui exercise kaitiakitanga over their taonga and all people involved in management or governance activities act to protect the mouri and ensure the Parangarahu Lakes area are left in a better state for future generations.
- Co management** – Te Roopu Tiaki provides leadership for co management of the Parangarahu Lakes Area, reflecting the Treaty Settlement and return of the Lakes to Taranaki Whānui as cultural redress. The co management partnership will foster community cohesion and participation.
- Integrated catchment management approach** - Management of the Parangarahu Lakes area will take into account the catchment areas of both Lakes notwithstanding the legal title and mixed ownership complexities. Water, wetlands, flora, fauna and people issues are not managed in isolation but as a living organic system with each part connected to the other parts.
- Mouri Ora** – Management decisions and actions will aim to improve, not degrade, the mouri of the Parangarahu Lakes area. This principle means balancing preservation and enhancement of the Parangarahu Lakes area for future generations with the provision of appropriate visitor activities and recreational use.

#### Baring Head/Ōrua-pouanui

Baring Head/Ōrua-pouanui is a highly visible headland seen from much of Wellington city. Although visibly distant the parks entry points can be accessed within an hour's drive from the city. A very active Friends group have led much of the landscape and heritage restoration work with the support of Greater Wellington. The Friends advocated for the restoration and redevelopment of the former lighthouse keeper's cottages and associated complex and have been highly involved in this work. The lighthouse complex is historically significant for being one of the few intact complexes remaining in NZ. Adjoining land owned by Maritime New Zealand and others includes the operational lighthouse and a NIWA climate monitoring station. Geologically the land form is significant for its uplifted marine terraces and fault line.

#### Natural and historic heritage significance

Baring Head/Ōrua-pouanui coastline, including the Wainuiomata River Estuary and mouth are listed as significant habitats for indigenous birds in the PNRP, with nine threatened or at-risk species resident or visiting. The park is also important habitat for many species of lizard in rock scree and escarpments. Whilst much of the escarpment has been impacted by stock grazing activities over a long period, the valley escarpment is identified as having very high ecological values containing threatened plant and animal species. Some areas have now been fenced and protected from further stock impacts for over five years. The park has areas of 'grey scrub', a rare plant community in decline, adapted to the frequent storm and salt-laden Cook Strait environment. Balancing open landscape values, protection of marine terraces, fire risk and restoration at Baring Head/Ōrua-pouanui will be a challenge. The Friends group has been highly active in weed removal and pest animal management as well as lighthouse complex restoration work, obtaining many grants for restoration and storytelling. *'Baring Head ecological values', Philippa Crisp (2011).*

Baring Head/Ōrua-pouanui is identified as a site of significance to Taranaki Whānui in the Proposed Natural

Resources Plan. The lighthouse complex at Baring Head/Ōrua-pouanui is a Heritage New Zealand-registered archaeological site. Planning and management of the park is guided by a range of detailed heritage reports and plans which support conservation, restoration and adaptive re-use or new development of the park and its features in a way that respects and retains heritage values. The landscape significance of Baring Head/Ōrua-pouanui is identified as of 'outstanding aesthetic value for unhindered views from the lighthouse station of Cook Strait through to the South Island and across the harbour mouth to south of Wellington'. *'Research Report on Heritage Features Baring Head, Wellington'. New Zealand Historic Places Trust Pouhere Taonga (2011).*

The most significant built heritage values are attributed to the lighthouse (outside the park), its associated buildings and WWII relics and fabric within the park. (Significant values are defined in more detail in Appendix 4 Heritage Schedule.) The light keepers complex encompasses:

- Two former light keeper's cottages
- Diesel generator house and office (the Power House)
- Vehicle garage
- Former WAAC barracks foundations
- Shelterbelt 'significant element' and other vegetation and landscape elements of the light keeper's complex. *Head/Ōrua-pouanui Lighthouse Compound Heritage Plan' Boffa Miskell (2014).*



*At Baring Head / Ōrua-pouanui native vegetation restoration activities have been in progress across the park for many years, led by the Friends group. Within the historic lighthouse complex the restoration focus is a mix of native and non-native to representative of the period when the lighthouse was staffed. The lighthouse itself and the NIWA climate monitoring facility are outside the park boundary.*





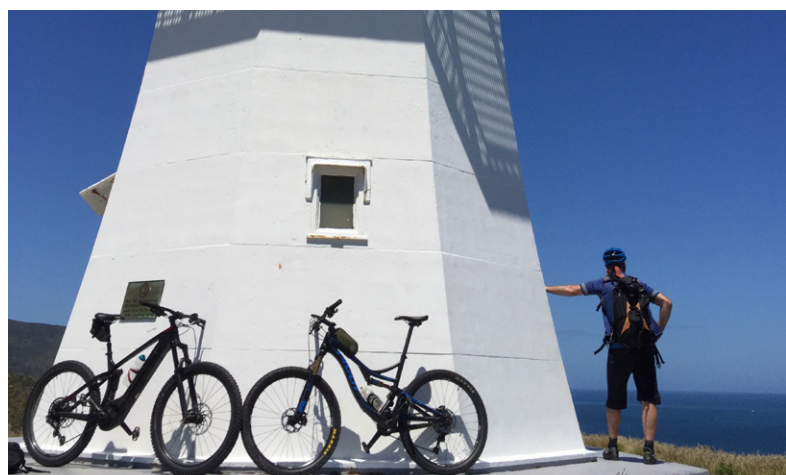
*Native birds are returning to Eastbourne in greater numbers thanks to the help of volunteer efforts in pest animal and plant management and restoration work.*



*Stay in a room with a stunning view? The entire lighthouse complex is historically significant as one of the most intact examples remaining in NZ. The Friends of Baring Head have been leading much of the restoration work to transform the two light keeper's cottages into overnight stay accommodation and the former diesel generator 'Power House' into a storytelling day visitor hub.*



*Parangarahu Lakes are managed collaboratively by Greater Wellington and PNBST via a co management plan developed in 2014. Iwi and local conservation groups have taken the lead for much of the restoration work here since stock grazing was ceased in 2005.*



*The upper level, Old Pencarrow lighthouse no longer operates but is a destination for many park visitors offering panoramic views back to Wellington and the South Island.*



Title holders	Legislative status	Territorial authority	Area	Reserve purposes	Heritage
Greater Wellington Regional Council	Administered under Local Government Act 2002. Held under the Reserves Act 1977 as Scenic, Scientific, Recreation and Esplanade reserves.	Hutt City Council (HCC)	Northern Forest 1620 ha	Recreation, conservation, scenery, wildlife	Port Nicholson Block Settlement Trust Statutory Acknowledgement (refer Appendix 7)
Crown - Department of Conservation			Parangarahu Lakes 423 ha		
Port Nicholson Block Settlement Trust (PNBST)			Baring Head/ Ōrua-pouanui 295 ha		NZ Heritage List: Old Pencarrow Lighthouse
HNZPT (Old Pencarrow Lighthouse)			Total: 2339		
Hutt City Council					

Key stakeholders	Activity
East Harbour Environmental Association (EHEA)	Conservation
Eastbourne Community Board	Community
Eastbourne Forest Rangers	Conservation
Federated Mountain Clubs (FMC)	Recreation
Friends of Baring Head (FOBH)	Conservation
Heritage New Zealand Pouhere Taonga (HNZPT)	Conservation
Hutt City Council (HCC)	Local Government
Kāinga Ora Homes and Communities	Housing and community development
Love Wainuiomata	Community
Lower Hutt Forest and Bird	Conservation
Mainland Island Restoration Operation (MIRO)	Conservation
Maritime New Zealand	Heritage/Science
NIWA (National Institute Of Water And Atmospheric Research)	Research/ Science
New Zealand Deer Stalkers Association (NZDA) Wellington Branch	Recreation
Resident associations	Community
Tupoki Takarangi Trust (TTT)	Mana whenua
Wainuiomata Community Board	Community
Wellington Hang Gliding and Paragliding Club	Recreation
Wellington Mountain Bike Club (WMTBC)	Recreation
Wellington Fish and Game Council (WF&G)	Recreation

### Key features and park characteristics

- High quality beech and broadleaf forest, mainland island conservation work
- Walking trails with harbour views
- Nationally significant lakes and regenerating forest
- Co management of Parangarahu Lakes with mana whenua, PNBST Lighthouses and heritage features at Parangarahu Lakes and Baring Head/Ōrua-pouanui
- Kaitiakitanga restoration work across three sections of park by highly engaged and supportive groups

### Opportunities for the future of the park - aspirations for long-term enhancements for parks

- Park-wide pest plant and animal management work supporting predator free initiatives and biodiversity restoration
- Trail improvements for access, amenity and environmental protection in the Northern Forest. Mountain bike trail improvements, Wainuiomata side. Accessible trails.
- Promote and improve access to Parangarahu Lakes including filling gap in lower level circuit trail.
- Develop further amenities at the lakes. Mana whenua opportunities
- Progressive restoration to high levels of ecosystem health in all areas of the park
- Restoration of lighthouse complex and grazed areas with native vegetation at Baring Head/Ōrua-pouanui
- Connecting Baring Head/Ōrua-pouanui and the lakes via the Pencarrow Coast Road



*Mature beech and podocarp forest offers city escapes with stunning harbour vistas.*



<b>EAST HARBOUR REGIONAL PARK</b>			<b>TIME</b>	<b>Notes</b>
Actions			Short 1-3	
			Medium 4-7	
			Long 8+ Years	
<b>Natural heritage Goal 1:</b>				
<i>Protect and restore high levels of terrestrial and freshwater ecosystem health to enhance biodiversity and ecosystem services</i>				
<b>All East Harbour</b>				
A201	Implement the 'Key Native Ecosystem' Plan priorities to minimise pest plant and animal threats in liaison with community and others	Ongoing	MIRO, FOBH, PNBST, KNE programme	
A202	Support a catchment-wide approach to conservation and restoration activities in the Gollans and Wainuiomata valleys, Kōhanga-piripiri catchment	Ongoing	PNRP, PBNST	
<b>Northern Forest</b>				
A203	Raise awareness and understanding of the values of old growth forest, recreation use and biosecurity impacts to support good stewardship	Short - Long	MIRO, EHEA, PNBST, WMTBC, Love Wainui, HCC, ECB, others	
A204	Support mainland island work with community including reintroduction of native fauna where appropriate	Ongoing	Mana whenua, MIRO, ECB, PBNST	
A205	Support pest plant and animal threat reduction work and trial new approaches to improve effectiveness and efficiency	Ongoing	MIRO, neighbours, PBNST	
<b>Parangarahu Lakes</b>				
A206	Support native vegetation restoration through a range of works including: <ul style="list-style-type: none"> <li>• Active replanting work</li> <li>• Pest plant and animal work</li> <li>• Catchment-wide work</li> </ul>	Medium	PNBST, MIRO, KNE programme	
A207	Protect park natural heritage values and visitor enjoyment from stock intrusion impacts through the development of better boundary fences, gates and other means	Short	Park neighbours	
A208	Prioritise the reintroduction of taonga species into the lakes for cultural benefit as outlined in Action 1.7 of the Parangarahu Lakes Area Co Management Plan 2014	Medium	PNBST	
A209	Work with others to protect: <ul style="list-style-type: none"> <li>• Dotterel breeding habitat and feeding areas along the coast such with measures such as signs, fences</li> <li>• Cushion fields, muehenbeckia spp and other threatened and at-risk plant species through access planning</li> </ul>	On-Going	HCC, MIRO, PNBST, Pencarrow Lodge, TTT, ECB	
A210	Support Hutt City and others in managing legal vehicle access to the park along the coast road	On-Going	HCC, PNBST, Pencarrow Lodge, TTT	

<b>EAST HARBOUR REGIONAL PARK</b>		<b>TIME</b>	<b>Notes</b>
Actions		Short 1-3	
		Medium 4-7	
		Long 8+ Years	
<b>Baring Head/Ōrua-Pouanui</b>			
A211	Restore the original lowland titoki/Ngaio forest of the central and northern plateau and escarpment areas through passive and active methods to improve ecosystem health, biodiversity values, visual amenity and demonstrate mahi tahi kaitiakitanga responsibilities:	Refer Restoration Priorities Map	
	a. Develop a long-term restoration plan to guide and support restoration efforts encompassing pest plant and animal management. Encourage the movement of birds in the open areas with pocket plantings, shelter and perches to help birds them disperse seed and support passive restoration efforts	Short	FOBH, KNE programme
	b. Develop a fire management 'tactical response plan' to guide ongoing fire threat management work e.g. firebreaks, 'green vegetation' firebreaks, native vegetation restoration, defensible space	Short	FOBH, Park neighbours, KNE
	c. Restore all wetland areas throughout the park including ephemeral seepage wetlands along the plateau and escarpment areas	Medium	FOBH, KNE
A212	Support important lizard habitat in rocky areas through a range of conservation interventions such as maintenance of low-level vegetation <ul style="list-style-type: none"> <li>Provide supporting educational opportunities for park visitors</li> <li>Manage pest animals that prey on lizards and other important native species</li> </ul>	Ongoing	KNE programme, FOBH
A213	Improve the health of the Wainuiomata River and its margins: <ol style="list-style-type: none"> <li>investigate removal of barriers to gravel inputs</li> <li>Add habitat elements such as logs</li> <li>Plant riparian margins</li> <li>Managing pest plants</li> <li>Educational activities</li> <li>Work on a catchment-wide basis</li> </ol>	Ongoing	FOBH, PNRP, HCC, park neighbours, general community
A214	Support the Te Whanganui-A-Tara Whaitua work for freshwater quality improvements in the Wainuiomata river catchment	Ongoing	Park neighbours, PNRP
<b>Recreation experience Goal 2:</b>			
<i>Parks are highly accessible places for many visitors to enjoy; they offer a variety of interesting experiences, enhancing the health and wellbeing of local communities and broader regional economy</i>			
<b>East Harbour – all</b>			
A215	Improve provision of vehicle parking areas where practicable at park entrances	Medium	HCC, ECB
A216	Investigate 'park and ride' opportunities from Eastbourne to the Lakes and Baring Head/Ōrua-pouanui with mana whenua and others	Medium	PNBST, HCC, tourism operators
A217	Work with adjoining landowners to investigate possible trail connections between the three areas of park (Northern Forest, Parangarahu Lakes and Baring head/Ōrua-Pouanui)	Long	HCC, private land owners, PNBST, ECB



<b>EAST HARBOUR REGIONAL PARK</b>		<b>TIME</b>	<b>Notes</b>
Actions		Short 1-3 Medium 4-7 Long 8+ Years	
A218	Develop a programme of photographically recording of restoration change over time and use it in storytelling for visitors to foster understanding of biodiversity	Short	
A219	Support the volunteer groups with a variety of opportunities for involvement in restoration and recreation activities throughout the park	Short	Stakeholders, community, volunteer groups
A220	Extend track user visitor monitoring to the Wainuiomata tracks in Northern Forest, Lakes and Baring Head/Ōrua-pouanui to inform management and planning work	Short	
<b>Northern Forest</b>			
A221	Investigate development of a 'marked route' access from behind the Wainuiomata Golf Course, linking into the existing track network in the Northern Forest along the ridgeline a. Investigate future uses of the back country hut for recreation/conservation purposes.	Long	HCC, private lands owners, WMTBC, Scout and community groups
A222	Review seasonal recreation hunting activities in the park	Long	Public consultation
A223	<b>Key destinations</b> Develop or enhance: <b>a. Beech walk circuit trail (Journey)</b> – Investigate a lower level contour trail connecting to existing trails, accessible from the Days Bay ferry. Also refer A237 <b>b. Butterfly Creek (Journey)</b> – Renew picnic facilities, storytelling <b>c. Main ridge track (Journey)</b> – Promote as a long walk with storytelling and key rest stops with seats <b>d. Wainuiomata circuit walk and Lowry Trig (Journey)</b> – Promote the scenic circuit walk options to Lowry Trig via Main Ridge and Lees Grove Track, Fern Gully or Zig Zag tracks. Enhance harbour views at Lowry Trig	Long Short Long Medium	WMTBC, MIRO, EHEA, ECB MIRO, EHEA, ECB WMTBC, MIRO, EHEA, ECB WMTBC, WCB, Love Wainuiomata
<b>ACCESS</b>			
A224	Work with community groups and associations to enhance park entrances, modify barriers to ensure they are highly visible and mountain buggy accessible and promote trails to local community	Short	WMTBC, WCB, Love Wainuiomata
A225	Improve signage leading to all track entrances from Muritai Road and bus stops e.g. on-road arrows/logos		HCC, trail groups
A226	Improve access and visibility of the Puriri Track entrance. Work with HCC to extend formed track to the footpath on the Wainuiomata Road and make the access barriers bike friendly	Short	WCB

<b>EAST HARBOUR REGIONAL PARK</b>		<b>TIME</b>	<b>Notes</b>
Actions		Short 1-3	
		Medium 4-7	
		Long 8+ Years	
A227	Improve the Zig Zag track entrance visibility from Fraser Street and Wainuiomata road	Short	Love Wainuiomata, WCB
A228	Improve the visibility of signage to the Fern Gully Track (Gardner Grove, Wainuiomata) and define the track entrance clearly with fencing to distinguish from adjoining private land	Short	WCB
<b>STORYTELLING</b>			
A229	Develop a simple interpretation/storytelling plan for the Northern Forest	Medium	Mana whenua, community groups, HCC
<b>TRAILS (also refer maps. Subject to detailed assessment and AEE process)</b>			
A230	Improve riding experience on southern part of Rata Ridge Track	Medium	
A231	Link tracks. Investigate the development of link tracks between Howard Road and Ngaumatau Road (walking) and Howard road entry and Wainuiomata Hill road (MTB)	Medium	Walking, cycling groups
A232	Add seats with backs/picnic facilities and storytelling at lookouts	Short - Medium	WCB, ECB, walking, cycling groups
A233	Work with recreation and conservation groups to sustainably manage the Rata Ridge Track and limit inappropriate use and track changes	Short	EHEA, WMTBC, MIRO
A234	On the Wainuiomata side of the park improve signage and visibility of entrance tracks and promote trail these local opportunities to the community	Short	Love Wainuiomata, MIRO, HCC
A235	Fire break alternative. Investigate a shared track for walking and cycling as alternative to the Fire Break Track between Stanley Street, Wainuiomata and the Zigzag Track. (This will reduce environmental impacts and create a more gentle contoured track)	Short-medium	Love Wainuiomata, WMTBC, WCB
A236	Investigate a short accessible loop associated with the Cheviot Track	Short	Residents Association, ECB
A237	Improve access/ amenity and investigate lower contour links between exiting tracks to create shorter, more accessible walks: <ul style="list-style-type: none"> <li>a. Access and environmental protection measures on the Ferry Road Tramping Track close to the Main Ridge Track. Add seats at some harbour view points.</li> <li>b. Consider current bait line tracks to create link between Korimako and Kereru Tracks</li> <li>c. Low level link between McKenzie Road and Karearea tracks.</li> </ul>	Medium-long	ECB, other groups
A238	Work to improve access to the park and the Puriri Track from the Wainuiomata Road	Medium	WTP, HCC, WMTBC
A239	Bait Track upgrade. Investigate upgrading the bait line track along Gollans Stream to create a connection with Butterfly Creek and the Wainuiomata Coast Road in liaison with park groups	Long	MIRO, WTP, WMTBC, Love Wainuiomata, ECB



<b>EAST HARBOUR REGIONAL PARK</b>		<b>TIME</b>	<b>Notes</b>
Actions		Short 1-3 Medium 4-7 Long 8+ Years	
A240	Fence park entry areas to define the public park land and the park entry points at Kowhai Street and Vermont Grove. Add signs and enhance trails which connect to the Main Ridge Track to create a local walking circuit walk	Long	WMTBC, WCB
<b>Parangarahu Lakes</b>			
A241	<b>Key destinations</b> Develop or enhance: <b>a. Lakes vista lookout (Landscape)</b> – Bluff Point, the 96m high point to the south of Old Pencarrow Lighthouse offers panoramic views. Investigate a connection with lower Kōhangapiripiri track to create a circuit and realign the existing lighthouse and Bluff Point Tracks for environmental protection and visitor enjoyment purposes. Add seats and storytelling. <b>b. Lake low level circuit (Journey)</b> – Close the gap in the easy grade circuit trail around Lake Kōhangapiripiri with a lower contour track from the eastern side of the Cameron Wetland boardwalk to the Cameron Ridge track near the lake (refer Parangarahu Lakes potential enhancements map). Add storytelling. Work with Hutt City to improve the trail experience enroute to the trail (Pencarrow Coast Road). <b>c. Lakes bird hide and shelter (Heritage)</b> – With PNBST and others investigate a viewing hide close to lake wildlife and storytelling/picnic shelter at a location such as near Koutu Kawau/Shag Rock, Lake Kōhangatera. Promote to attract people to see this lake and design for use as an orientation and storytelling hub for the park and tour groups	Short - Medium  Medium  Medium	PNBST, MIRO  PNBST, MIRO, HCC  PNBST, MIRO
A242	Toilet. Work with others to develop toilet facilities in an appropriate location for environmental protection and visitor enjoyment near Lake Kōhangapiripiri entrance	Medium	HCC, PNBST
A243	Remove redundant internal stock fences to enhance amenity	Medium	MIRO, PNBST
A244	Support visits to the Parangarahu Lakes and Baring Head / Ōrua-pouanui through events programme activities. (Refer: Objective 7, Parangarahu Lakes Co Management Plan)	Short	PNBST
A245	Support mana whenua with opportunities that enable more visitors to see and experience the Lakes such as bike hire, other concessionaire services	Long	PNBST
<b>AMENITY/TRAILS</b> (also refer maps. Subject to detailed assessment and AEE process)			
A246	Connecting track. Investigate the development of a connecting track from the lakes vista (A241a) lookout to the lower track	Short	PNBST, trail groups

<b>EAST HARBOUR REGIONAL PARK</b>		<b>TIME</b>	<b>Notes</b>
Actions		Short 1-3 Medium 4-7 Long 8+ Years	
A247	Install signage at the (lower) Pencarrow Lighthouse and at the walking track access point beside the Coast Road to encourage people to visit and explore the Parangarahu Lakes. More clearly identify the easier trail opportunities at the lakes for cyclists and walkers. Add Distance markers from Burdens gate to Lake Kohangatera entry gate.	Medium	PNBST, HCC, ECB
A248	Install bike rails for visitors to secure their bikes at key trail points in the park. Install seats with backs and picnic tables at view points and other attractive locations e.g. the Lake Kōhangatera eastern track. Add a seat or picnic table in shade near the junction of the Valley View Hill Track.	Short	PNBST, MIRO, ECB
<b>STORYTELLING</b>			
A249	Worth with and support PNBST to reveal stories to people visiting the park	Medium	PNBST, MIRO, community groups
A250	Work with others to enhance 'Te Ara Tupua' storytelling along Pencarrow coast	Long	PNBST, HCC, MIRO,
<b>Baring Head/Ōrua-Pouanui</b>			
A251	<b>Key destinations</b> Develop or enhance:		
	<b>a. Lighthouse complex (Heritage)</b> Complete restoration works underway to restore heritage precinct (refer action below)	Medium	FOBH, PNBST
	<b>b. WWII lookout and Trig (Heritage)</b> – Enhance wayfinding to Trig Point from lighthouse complex, add storytelling and seats	Medium	FOBH, PNBST
	<b>c. Pump house circuit trail (Journey)</b> – Develop an easy access track with natural and historic heritage storytelling via the Pump House to create a circuit (refer action A170 below for bridge).	Long	FOBH, PNBST
	<b>d. Fitzroy Bay lookout (Landscape)</b> – Develop the Fitzroy Bay lookout on the bridle trail as circuit walk destination from the main carpark. Add seat/ picnic table and storytelling	Long	FOBH, PNBST

<b>EAST HARBOUR REGIONAL PARK</b>		<b>TIME</b>	<b>Notes</b>
Actions		Short 1-3 Medium 4-7 Long 8+ Years	
A252	<p>Complete restoration of the lighthouse complex including heritage interpretation and heritage plantings</p> <ul style="list-style-type: none"> <li>Restore light keeper's cottages for overnight booked accommodation</li> <li>Complete the Power House day visitor hub with storytelling</li> <li>Develop the children's Discovery Trail</li> <li>Complete restoration of the Garage as a conservation volunteer base</li> <li>Provide basic facilities to support limited basic camping stays for conservation volunteer work</li> <li>Restore the complex shelter belt and gardens based on the weeding and planting plan, maintaining non-invasive heritage plants</li> <li>Support the FOBH in their fundraising opportunities</li> </ul>	Short – Medium	FOBH, PNBST
<b>ACCESS</b>			
A253	Internal road and carpark. Upgrade internal park road for overnight stay visitor access to the lighthouse complex including passing bays. Investigate shorter term safety improvements. Develop parking area near lighthouse	Medium	Neighbours, easement holders
A254	Investigate the further improvement of the internal Baring Head/Ōrua-pouanui access road to support adjoining land access if the Fitzroy Bay coast road becomes inaccessible in future	Long	PNBST, HCC, neighbours, easement holders
<b>TRAILS (also refer maps. Subject to detailed assessment and AEE process)</b>			
A255	Support the proposed future extension of the Ngā Haerenga/Remutaka Cycle Trail via Baring Head /Ōrua-pouanui. Work in liaison with other agencies for the Coast Road 'Heartland ride'	Medium - Long	HCC, Love Wainui, NIWA, NZ Police, Maritime NZ, FOBH, NZCT, trail groups, TTT
A256	Bridge and trail. Develop a walking/cycling bridge near the Wainuiomata River mouth carpark to improve access to the park and support a circuit trail to the Pump House and Power Line road	Medium - Long	FOBH, PNBST, PNRP
A257	Gully track to coast. Investigate a connecting track to the coast from lighthouse area	Short	Friends
A258	Develop the ridge top shared trail from the management road to the Trig Point and lighthouse to walking track standard.	Long	FOBH, trail groups
A259	River circuit. Investigate developing a new track to create river circuit track from both carparks (via new bridge). Refer Potential Enhancements map.	Long	



<b>EAST HARBOUR REGIONAL PARK</b>		<b>TIME</b>	<b>Notes</b>
Actions		Short 1-3	
		Medium 4-7	
		Long 8+ Years	

### **Cultural heritage features and landscape values Goal 3:**

*A variety of landscape settings are preserved and enhanced reflecting social values; historic heritage features are protected and interpreted for visitors*

#### **East Harbour – all**

A260	Maintain scenic view points from key locations for visitor enjoyment and include seats or story telling where appropriate	Short - Long	Mana whenua
A261	Consider additions, agreements or other mechanisms to create ongoing ecological and recreation connections between the three parts of East Harbour Park	Long	

#### **Northern Forest**

A262	Support mana whenua in identifying a dual Māori name for Northern Forest	Short	PNBST
------	--	-------	-------

#### **Parangarahu Lakes**

A263	Maintain scenic view shafts from Old Pencarrow Lighthouse and other key viewpoints for visitor enjoyment	Long	
A264	Liaise with Heritage NZ in works associated with improving amenity and trail access in the vicinity of Old Pencarrow Lighthouse	Medium	HNZ, HCC

#### **Baring Head/Ōrua-Pouanui**

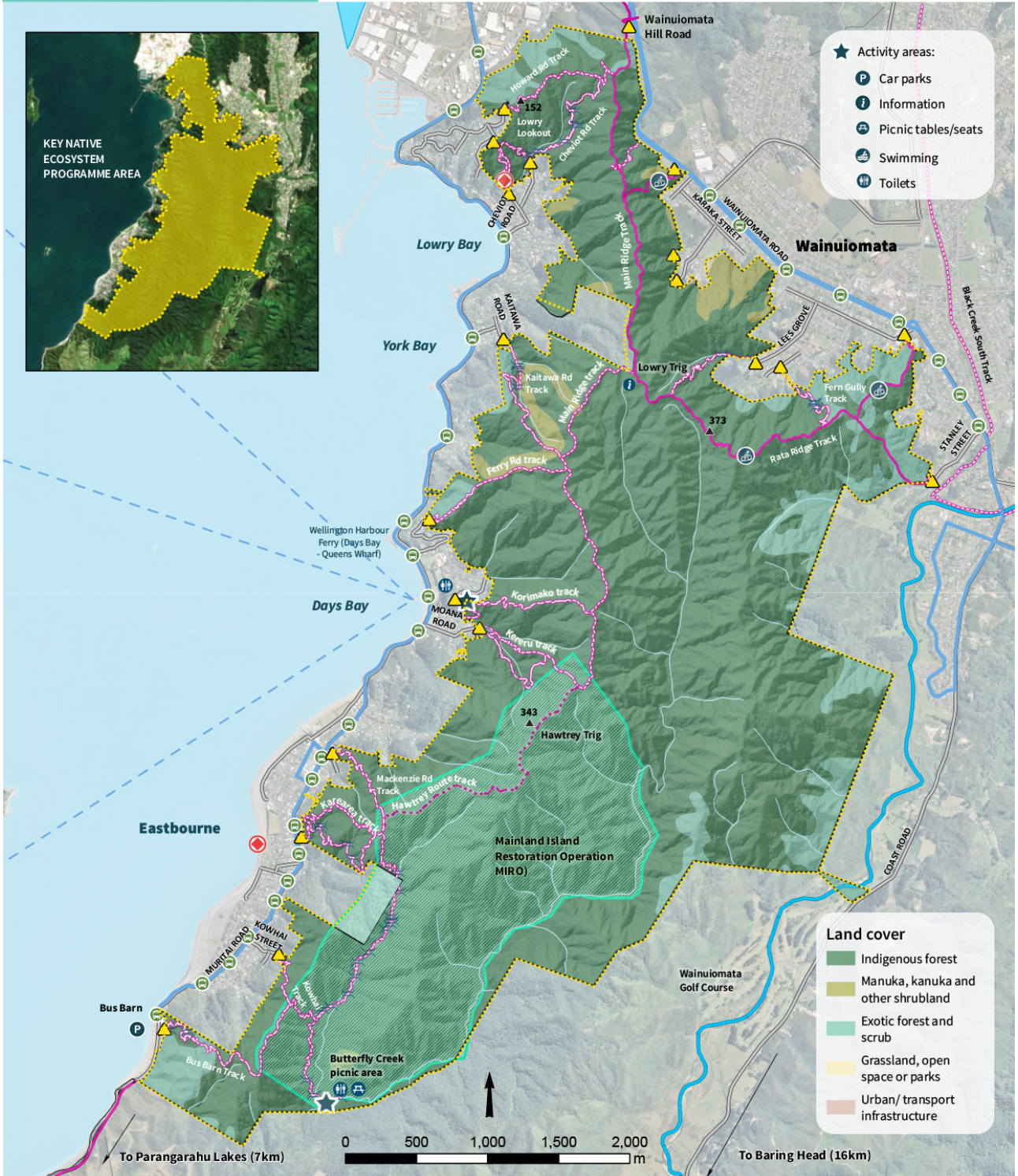
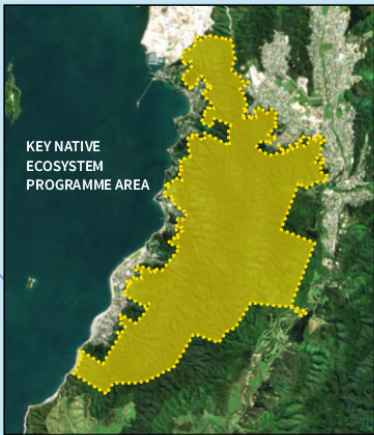
A265	Develop conservation management plans to guide management of heritage assets where appropriate such as: <ul style="list-style-type: none"> <li>Baring Head/Ōrua-pouanui WWII relics</li> </ul>	Short - Medium	
A266	Work towards improvements in visitor access and neighbour amenity to the lighthouse complex including possible easement changes or land exchange	Long	Park neighbours, community

<b>EAST HARBOUR REGIONAL PARK</b>		<b>TIME</b>	<b>Notes</b>
Actions		Short 1-3 Medium 4-7 Long 8+ Years	
<b>The way we work Goal 4:</b>			
<i>Working collaboratively and consistently with others, we enable learning and build strong partnerships to deliver more conservation and recreation benefits for parks, people and communities</i>			
<b>All East Harbour</b>			
A267	Develop new collaborations in recreation, tourism and conservation to support core park values, catchment-wide outcomes and regional economic benefits: <ul style="list-style-type: none"> <li>Support ecotourism operator product development where appropriate</li> <li>Support PNBST lead initiatives in tour guiding, storytelling and other enterprise</li> <li>Connect conservation projects through engagement or expertise</li> <li>Support works and initiatives that reduce the effects of climate change</li> <li>Work with adjoining land owners to develop Remutaka Cycle trail connections</li> </ul>	Short-Medium	PNBST, TTT, HCC
A268	Work with neighbouring land owners to ensure all boundary fences and gates are stock proof ( <i>attention to Parangarahu Lakes area</i> )	<i>High Priority</i> Short	Park neighbours, restoration groups
<b>Northern Forest</b>			
A269	Continue to support conservation collaborations with Mainland Island Restoration Operation (MIRO) and East Harbour Environmental Association support biodiversity and reduce threats	Ongoing	MIRO, Conservation groups
<b>Parangarahu Lakes</b>			
A270	Continue to honour and implement the directions and detailed actions of the Parangarahu Lakes Area Co Management Plan 2014 and support Rōpū Tiaki co management work	Ongoing	PBNST
A271	Work with others to improve aquatic ecosystem health of the lakes and fish passage in and from the lakes	Ongoing	DOC, Hutt City PNBST, Fish & Game, MIRO, others
<b>Baring Head/Ōrua-Pouanui</b>			
A272	Work collaboratively with the Friends of Baring Head in conservation and restoration efforts throughout the park <ul style="list-style-type: none"> <li>Provide facilities to support work such as overnight stays</li> <li>Plans and standards/guidelines to support work</li> <li>Expert advice and training opportunities</li> <li>Sharing expertise and knowledge</li> </ul>	Ongoing	FOBH
A273	Work collaboratively with other agencies at Baring Head/Ōrua-pouanui to maintain or enhance amenities and views from the lighthouse complex	Ongoing	NZ Police, Maritime NZ, GNS NIWA, HNZ, DOC, TTT

Map 11: Northern Forest existing conditions

# East Harbour Northern Forest Existing conditions (2020)

- |                               |   |                              |
|-------------------------------|---|------------------------------|
| <b>Features and amenities</b> | <b>Tracks</b>                             | <b>Local bus stops</b>       |
| ▲ Entrances                   | — Shared use                              | — Bus routes (83, 170)       |
| ★ Activity areas*             | — Walking/ tramping only                  | — East by West Harbour ferry |
| ● Heritage                    | — Routes                                  | — Wainuiomata River          |
| ▲ Summits                     | <b>Roads, rivers and public transport</b> | — Other rivers/ streams      |
| ⌘ Bridges                     | — Parks/ access roads                     |                              |





Map 12: Northern Forest potential enhancements

# East Harbour Northern Forest Potential enhancements

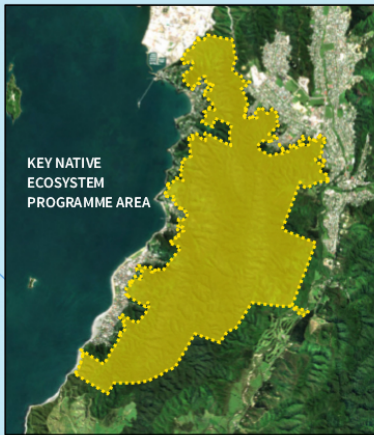
**Key destination**

- a. Beech walk circuit trail
- b. Butterfly Creek
- c. Main ridge track
- d. Wainuiomata circuit walk and Lowry Trig

**Amenity**

- A231 Link tracks
- A235 Fire break track alternative
- A237 (a, b, c) Access and links
- A239 Bait Track upgrade

**Areas for potential tracks**



**Features and amenities**

- Entrances
- Activity areas\*
- Heritage
- Summits
- Bridges

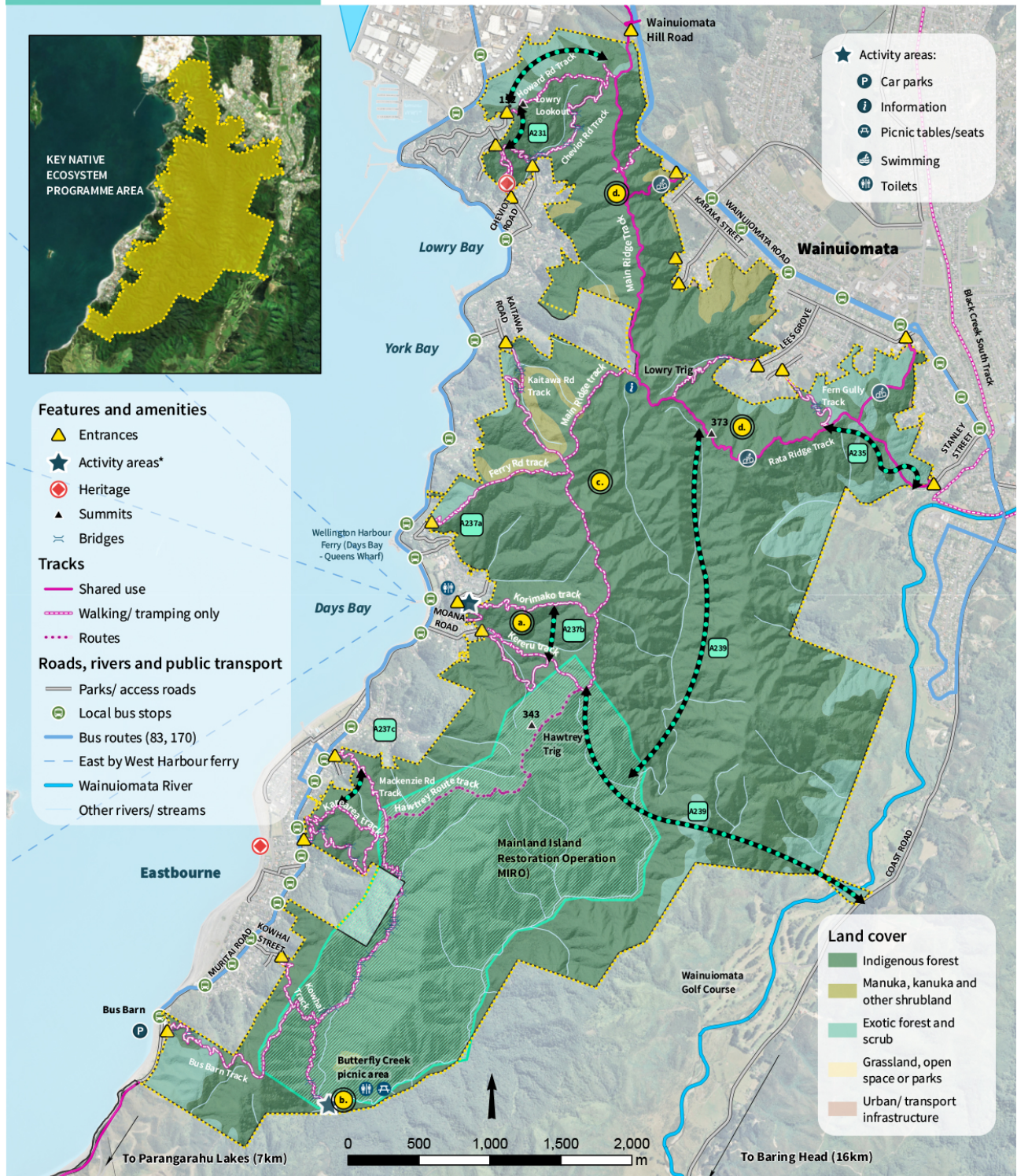
**Tracks**

- Shared use
- Walking/ tramping only
- Routes

**Roads, rivers and public transport**

- Parks/ access roads
- Local bus stops
- Bus routes (83, 170)
- East by West Harbour ferry
- Wainuiomata River
- Other rivers/ streams

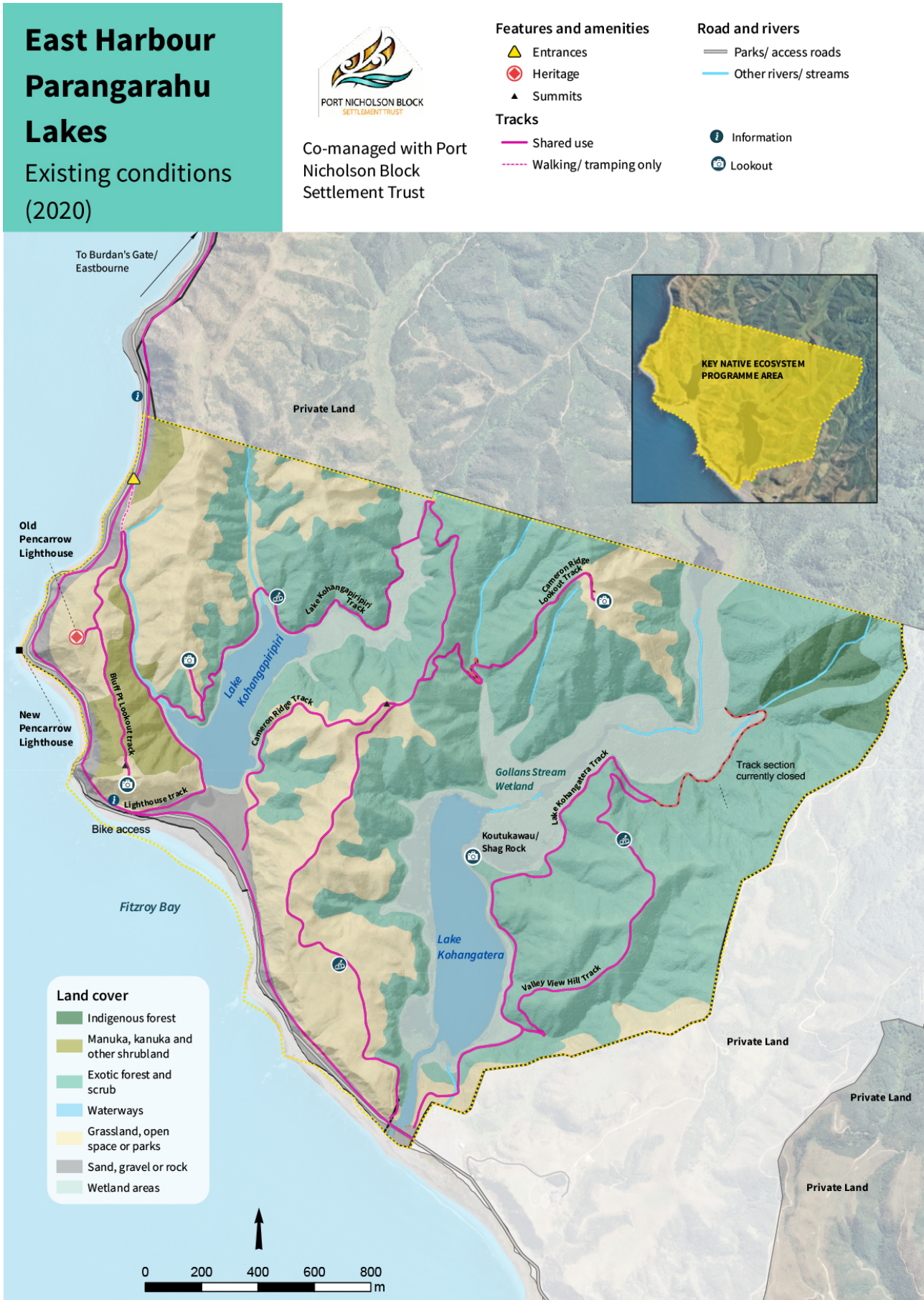
- ★ Activity areas:
- Car parks
  - Information
  - Picnic tables/seats
  - Swimming
  - Toilets



- Land cover**
- Indigenous forest
  - Manuka, kanuka and other shrubland
  - Exotic forest and scrub
  - Grassland, open space or parks
  - Urban/ transport infrastructure



Map 13: Parangarahu Lakes existing conditions





Map 14: Parangarahu Lakes potential enhancements

# East Harbour Parangarahu Lakes Potential enhancements



Co-managed with Port Nicholson Block Settlement Trust

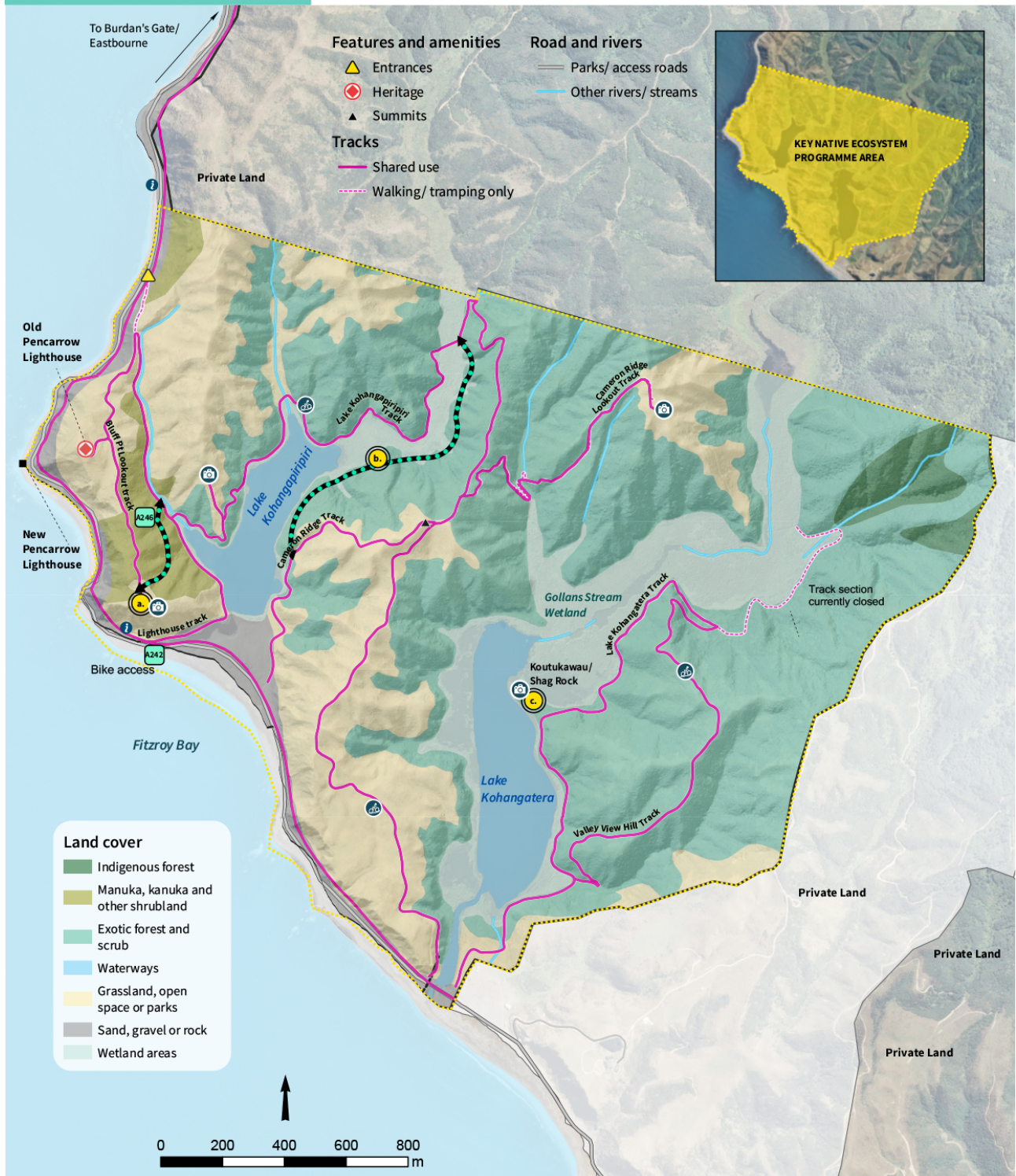
**Key destination**

- a. Lakes vista lookout
- b. Lakes low level circuit
- c. Lakes bird hide and shelter

**Amenity**

- A242 Toilet
- A246 Connecting track

**Areas for potential tracks**





Map 15: Baring Head/Ōrua-pouanui existing conditions

**East Harbour  
Baring Head/  
Ōrua-pouanui  
Existing conditions  
(2020)**

- |                               |                         |                                      |
|-------------------------------|-------------------------|--------------------------------------|
| <b>Features and amenities</b> | <b>Tracks</b>           | <b>Land cover</b>                    |
| ▲ Entrances                   | — Shared use            | ■ Manuka, kanuka and other shrubland |
| ★ Activity areas*             | <b>Roads and rivers</b> | ■ Exotic forest and scrub            |
| ● Heritage                    | — Parks/ access roads   | ■ Waterways                          |
| ▲ Summits                     | — Wainuiomata River     | ■ Grassland, open space or parks     |
|                               | — Other rivers/ streams | ■ Sand, gravel or rock               |
|                               | □ Private land          | ■ Wetland areas                      |





Map 16: Baring Head/Ōrua-pouanui potential enhancements





Map 17: Baring Head/Ōrua-pouanui restoration priorities

