

**Wellington Regional Council
Harbourmaster's Direction 1A/2023
Ferry distance off Wellington South Coast in certain conditions**

To: KiwiRail Limited (operating as Interislander)
And to: StraitNZ Bluebridge Limited (operating as Bluebridge)

I, **GRANT NALDER**, Wellington Regional Harbourmaster, issue the following Direction pursuant to section 33F(1)(c)(i) of the Maritime Transport Act 1994 **UPON THE GROUNDS** that the Direction is necessary for the purpose of ensuring maritime safety;

BACKGROUND

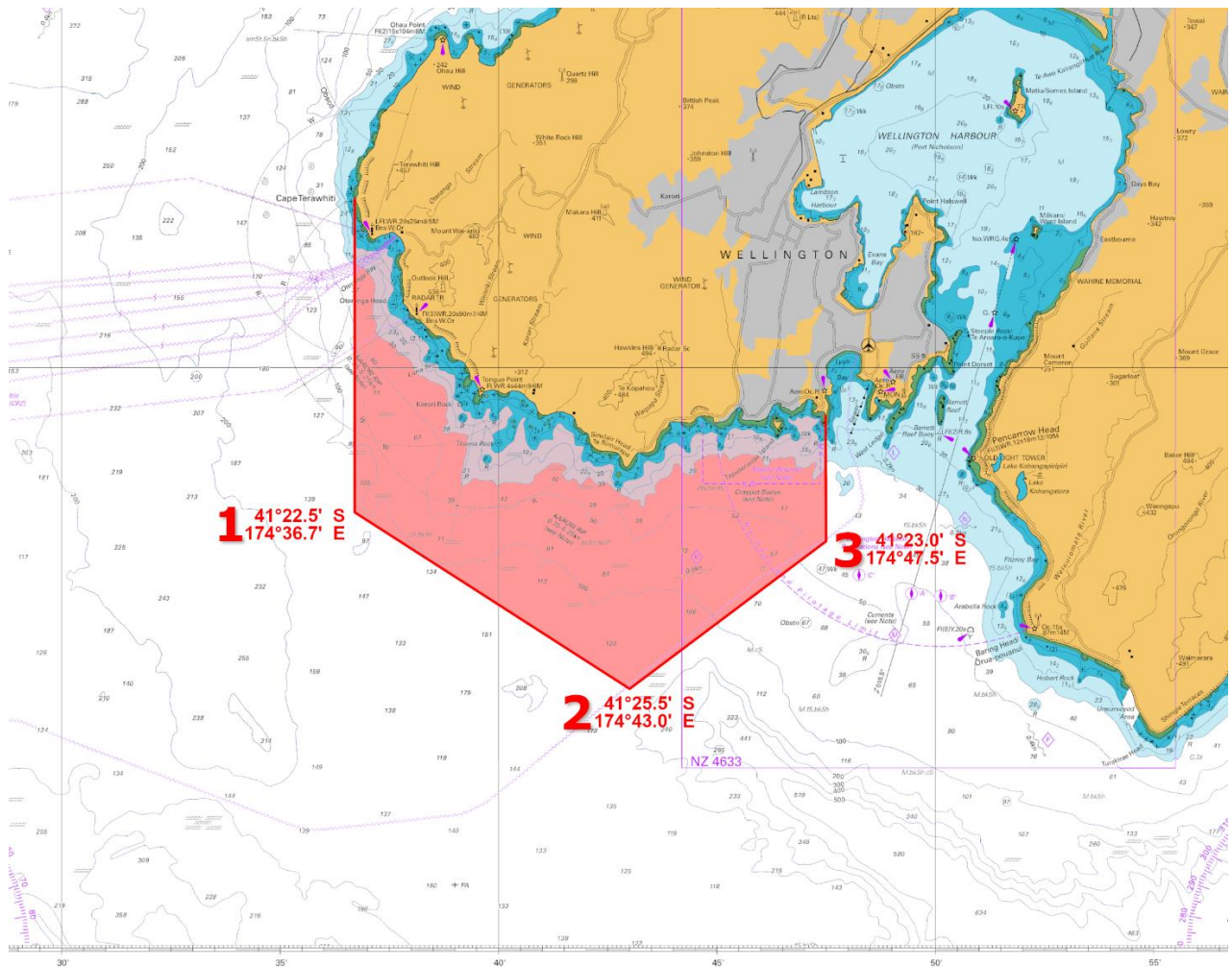
Up to five ferries, most carrying passengers, transit the Wellington South Coast several times a day. It is an inhospitable coast that provides little shelter in southerly conditions and the seabed rises rapidly relatively near to the coast, providing little opportunity for anchoring until a vessel is close to shore. Should a vessel experience loss of propulsion or loss of control in this area, the time available to remedy the fault is restricted by the rate of drift and distance from shore. The purpose of this Direction is to provide more time for a vessel in difficulty on this coast to be able to resolve the issue prior to the need for anchoring, and for support services to prepare if necessary. The distance off used is generally aligned with the annual Notice to Mariners No. 10 in the Nautical Almanac.

APPLICATION

This Direction applies to vessels operated by Interislander and Bluebridge as Cook Strait freight and Ro-Ro ferries between the North and South Islands and came into effect on 24 April 2023. The modification made on 28 June comes into effect immediately. The Direction will remain in force for a period of 12 months and may be extended by further notice in writing.

DIRECTION

All vessels operated by Interislander and Bluebridge transiting the Wellington South Coast shall, when the Baring Head five-minute average wind speed is 25 knots or more from any Southerly direction in an arc from East-South-East (112.5°) to West-South-West, (247.5°), navigate outside the area shaded on the chart excerpt below. This area is made by joining points that are two nautical miles due South of Te Raekaihau Point (Western side of Lyall Bay), four nautical miles South of Sinclair Head and 5.5 nautical miles South of Cape Terawhiti. i.e. seaward of the shaded areas shown in the chart excerpt below.



DATED at Wellington this 28 day of June 2023.

Grant Nalder
Regional Harbourmaster
Wellington Regional Council